



Cabinet fans manufactured from heavy gauge galvanised steel sheet and internally lined with melamine foam acoustic insulation (M1). All models incorporate double inlet single phase direct-drive forward curved centrifugal fan fitted with anti vibration mounts and IP55 remote terminal box.

All fans installed in acoustic cabinet fans CVB / CVT CENTRIBOX comply with the efficiency requirements of the ErP Directive.

All cabinets can be installed outdoors as standard.

Motors

Available, depending upon the model, with single phase motors in 4 or 6 poles. Motors are IP20, IP44 or IP55 (1), Class F insulation, with ball bearings and thermal protection.

Electrical supply:

Single phase 230V-50Hz.

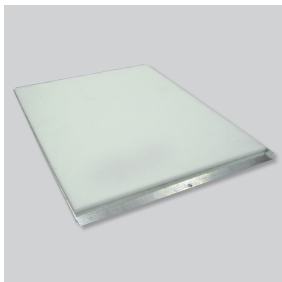
Three phase 230/400V-50Hz.

All single phase models are speed controllable by tension.

All three phase models are speed controllable by frequency inverter.

(1) See technical characteristic chart.

Working temperature from -20°C to +40°C.



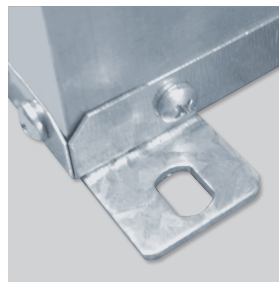
Low noise level

Acoustic insulation of 7 mm thickness (M1) melamine foam reducing the noise level significantly.



Outdoor installation

All cabinets can be installed outdoors as standard.



Easy to mount

All models are supplied with four mounting feet to facilitate installation.



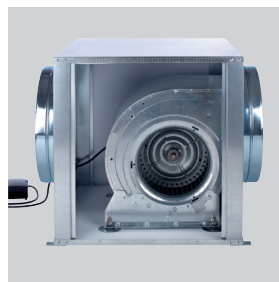
Flame retardant IP55 remote terminal box

To ease installation and connection to external controls.



Anti-vibration mounts

Reducing vibration and noise transmission to the installation.



Circular duct connection flanges

In line circular duct connection flanges at the inlet and discharge.

TECHNICAL CHARACTERISTICS

Before installation check that the product electrical characteristics listed on the data plate label (voltage, power, frequency, etc.) match those of the intended electrical supply.

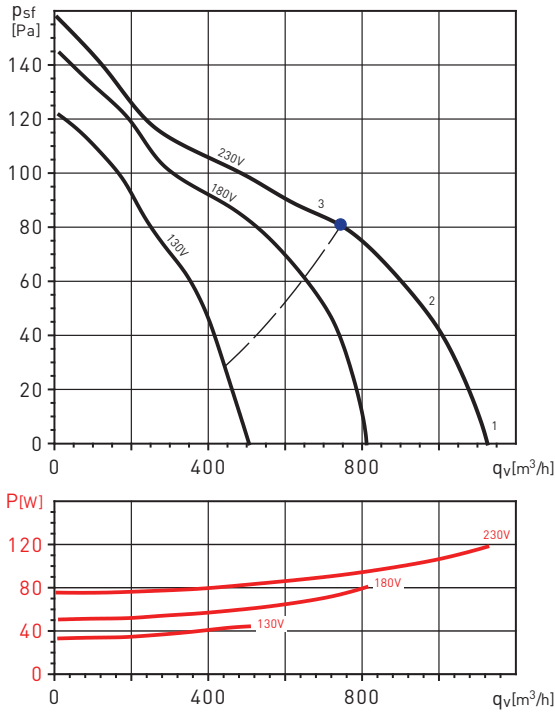
Model	Speed (rpm)	Motor power (W)	Motor Protection	Insulation class	Max. abs. current (A)		Max. airflow (m³/h)	Sound pressure level* (dB (A))	Weight (kg)	Speed controller		Variable frequency inverter	
					230V	400V				REB	RMB	VFKB	VFTM
6 POLES SINGLE PHASE MOTORS													
CVB-180/180 NT 72W EXPORT	900	72	IP44	F	0,5	-	1.130	44	22	REB-1 N	RMB-1,5	-	-
CVB-240/240N RE 200W EXPORT	900	200	IP55	F	1,7	-	2.690	51	35	REB-2,5 N	RMB-3,5	-	-
CVB-240/240N RE 245W EXPORT	900	245	IP55	F	1,9	-	2.910	53	36	REB-2,5 N	RMB-3,5	-	-
CVB-270/200N RE 245W EXPORT	900	245	IP55	F	2,2	-	2.860	55	41	REB-5	RMB-3,5	-	-
CVB-270/200N RE 515W EXPORT	900	515	IP55	F	2,9	-	3.370	55	42	REB-5	RMB-3,5	-	-
CVB-270/270 NT 245W EXPORT	900	245	IP44	F	2,9	-	3.760	52	43	REB-5	RMB-3,5	-	-
CVB-270/270 RE 515W EXPORT	900	515	IP55	F	3,3	-	4.040	53	55	REB-5	RMB-3,5	-	-
CVB-320/240 NT 736W EXPORT	900	736	IP44	F	5,6	-	5.690	55	57	REB-10	RMB-8	-	-
6 POLES THREE PHASE MOTORS													
CVT-320/240 NT 1100W EXPORT	900	1100	IP44	F	6,1	3,5	6.180	58	55	-	-	VFKB-45	VFTM TRI 1,5
CVT-380/380 NT 2200W EXPORT	900	2200	IP55	F	8,87	5,1	8.080	63	70	-	-	VFKB-48	VFTM TRI 2,2
4 POLES SINGLE PHASE MOTORS													
CVB /4 180/180 RE 147W EXPORT	1400	147	IP44	F	1,2	-	1.650	53	23	REB-2,5 N	RMB-1,5	-	-
CVB /4 240/240 NT 373W EXPORT	1400	373	IP44	F	3,9	-	2.960	57	38	REB-5	RMB-8	-	-
CVB/4-240/240 NT 550W EXPORT	1400	550	IP44	F	3,9	-	4.140	61	40	REB-5	RMB-8	-	-
CVB/4-270/200 N 373W EXPORT	1400	373	IP20	F	3,6	-	2.740	55	44	REB-5	RMB-8	-	-
CVB/4-270/270 N 550W EXPORT	1400	550	IP20	F	4,4	-	2.820	57	46	REB-5	RMB-8	-	-

* Sound pressure level measured in free field at 1.5m, at the inlet side with ducted outlet, at the medium working point of the performance curve.

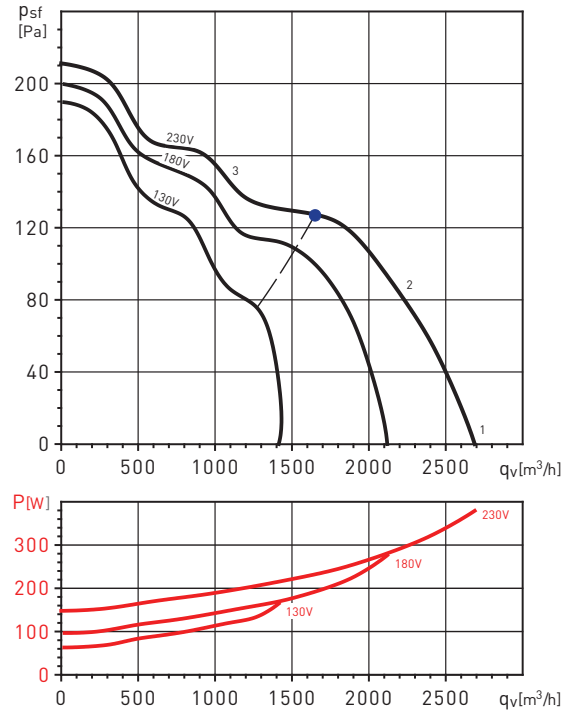
PERFORMANCE CURVES

- q_v : Airflow in m^3/h .
- p_{st} : Static pressure in Pa.
- Dry air at 20°C and 760 mmHg.
- Sound power levels (LwA dB[A]).
- Performance data in accordance with ISO 5801 and AMCA 210-99 Standards.

CVB-180/180 NT 72W EXPORT



CVB-240/240N RE 200W EXPORT



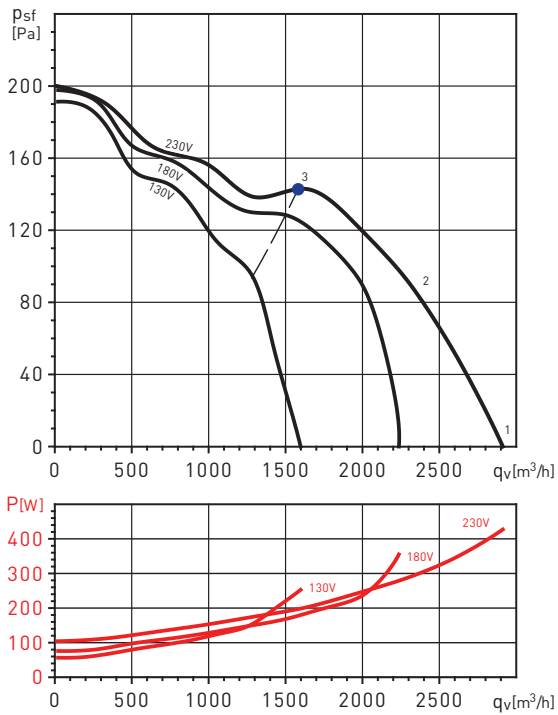
Duty point		63	125	250	500	1000	2000	4000	8000	LwA
1	Inlet	37	44	49	49	53	51	46	38	57
	Outlet	37	44	50	57	63	61	57	51	66
	Radiated	37	41	42	43	43	38	31	24	49
2	Inlet	38	45	50	50	54	52	47	39	58
	Outlet	38	45	51	58	64	62	58	52	67
	Radiated	38	42	43	44	44	39	31	25	50
3	Inlet	37	44	49	49	53	51	46	38	57
	Outlet	37	44	50	57	63	61	57	51	66
	Radiated	37	41	42	43	43	38	31	24	49

Duty point		63	125	250	500	1000	2000	4000	8000	LwA
1	Inlet	44	53	62	61	62	60	55	45	68
	Outlet	44	53	63	69	72	70	66	58	76
	Radiated	44	50	55	55	52	47	40	31	60
2	Inlet	42	51	60	59	60	58	53	43	66
	Outlet	42	51	61	67	70	68	64	56	74
	Radiated	42	48	53	53	50	45	38	29	58
3	Inlet	38	47	56	55	56	54	49	39	62
	Outlet	38	47	57	63	66	64	60	52	70
	Radiated	38	44	49	49	46	41	34	25	54

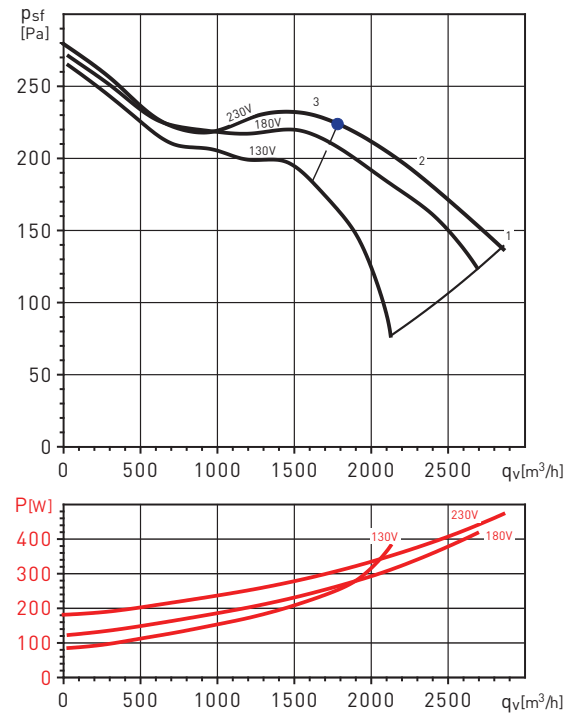
PERFORMANCE CURVES

- q_v : Airflow in m^3/h .
- p_{st} : Static pressure in Pa.
- Dry air at 20°C and 760 mmHg.
- Sound power levels (L_{wA} dB(A)).
- Performance data in accordance with ISO 5801 and AMCA 210-99 Standards.

CVB-240/240N RE 245W EXPORT



CVB-270/200N RE 245W EXPORT



Duty point		63	125	250	500	1000	2000	4000	8000	L _{wA}
1	Inlet	47	56	65	64	65	63	58	48	71
	Outlet	47	56	66	72	75	73	69	61	79
	Radiated	47	53	58	58	55	50	43	34	63
2	Inlet	44	53	62	61	62	60	55	45	68
	Outlet	44	53	63	69	72	70	66	58	76
	Radiated	44	50	55	55	52	47	40	31	60
3	Inlet	40	49	58	57	58	56	51	41	64
	Outlet	40	49	59	65	68	66	62	54	72
	Radiated	40	46	51	51	48	43	36	27	56

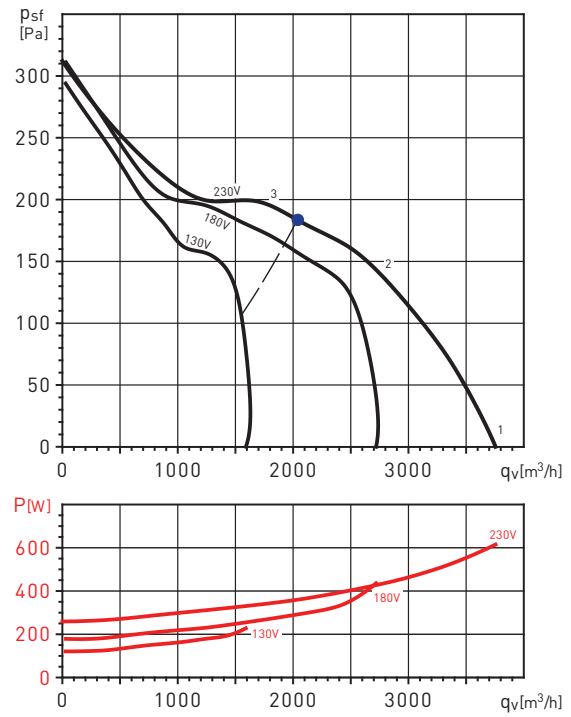
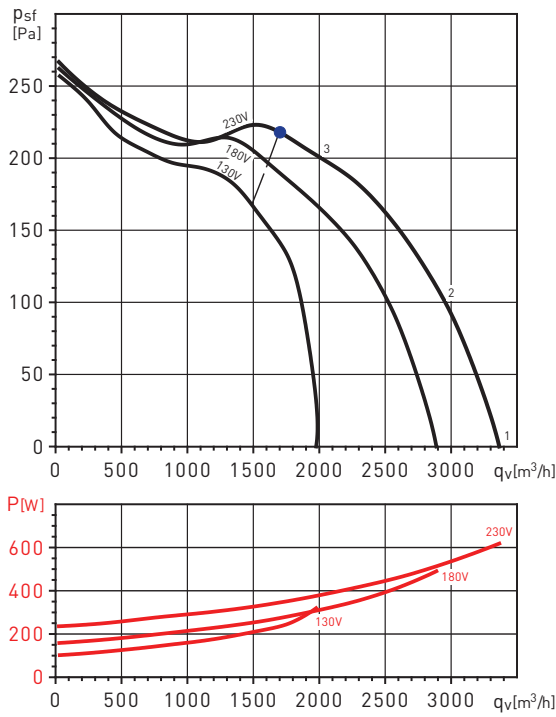
Duty point		63	125	250	500	1000	2000	4000	8000	L _{wA}
1	Inlet	48	59	67	67	68	68	64	55	74
	Outlet	48	59	68	75	78	78	75	68	83
	Radiated	48	56	60	61	58	55	49	41	65
2	Inlet	43	54	62	62	63	63	59	50	69
	Outlet	43	54	63	70	73	73	70	63	78
	Radiated	43	51	55	56	53	50	44	36	60
3	Inlet	38	49	57	57	58	58	54	45	64
	Outlet	38	49	58	65	68	68	65	58	73
	Radiated	38	46	50	51	48	45	39	31	55

PERFORMANCE CURVES

- q_v : Airflow in m^3/h .
- p_{sf} : Static pressure in Pa.
- Dry air at 20°C and 760 mmHg.
- Sound power levels (LwA dB(A)).
- Performance data in accordance with ISO 5801 and AMCA 210-99 Standards.

CVB-270/200N RE 515W EXPORT

CVB-270/270 NT 245W EXPORT



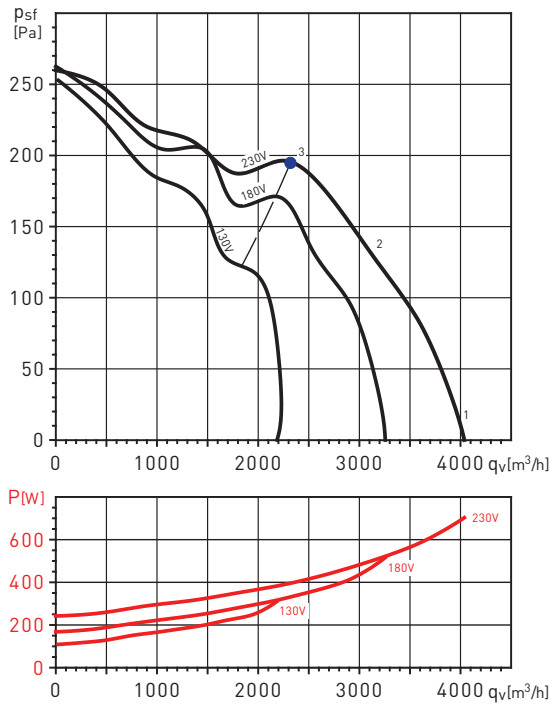
Duty point		63	125	250	500	1000	2000	4000	8000	LwA
1	Inlet	50	59	68	67	68	66	61	51	74
	Outlet	50	59	69	75	78	76	72	64	82
	Radiated	50	56	61	61	58	53	46	37	66
2	Inlet	46	55	64	63	64	62	57	47	70
	Outlet	46	55	65	71	74	72	68	60	78
	Radiated	46	52	57	57	54	49	42	33	62
3	Inlet	41	50	59	58	59	57	52	42	65
	Outlet	41	50	60	66	69	67	63	55	73
	Radiated	41	47	52	52	49	44	37	28	57

Duty point		63	125	250	500	1000	2000	4000	8000	LwA
1	Inlet	46	56	63	62	64	63	58	49	69
	Outlet	46	56	64	70	74	73	69	62	78
	Radiated	46	53	56	56	54	50	43	35	61
2	Inlet	43	53	60	59	61	60	55	46	66
	Outlet	43	53	61	67	71	70	66	59	75
	Radiated	43	50	53	53	51	47	40	32	58
3	Inlet	40	50	57	56	58	57	52	43	63
	Outlet	40	50	58	64	68	67	63	56	72
	Radiated	40	47	50	50	48	44	37	29	55

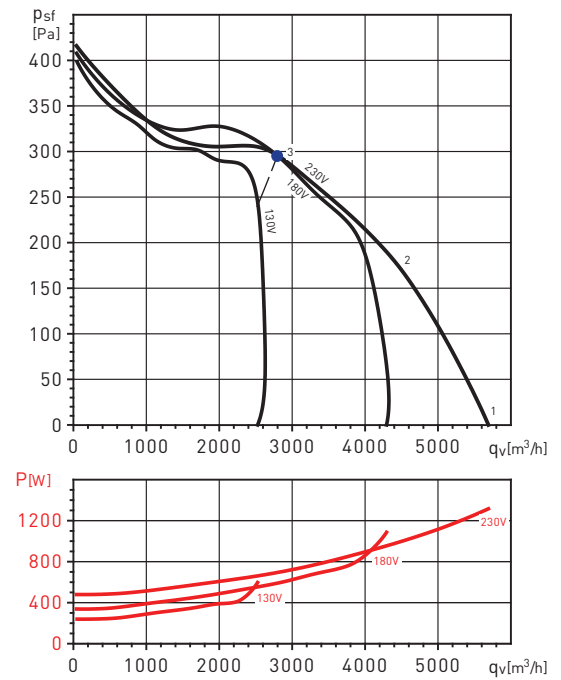
PERFORMANCE CURVES

- q_v : Airflow in m^3/h .
- p_{st} : Static pressure in Pa.
- Dry air at 20°C and 760 mmHg.
- Sound power levels (LwA dB(A)).
- Performance data in accordance with ISO 5801 and AMCA 210-99 Standards.

CVB-270/270 RE 515W EXPORT



CVB-320/240 NT 736W EXPORT



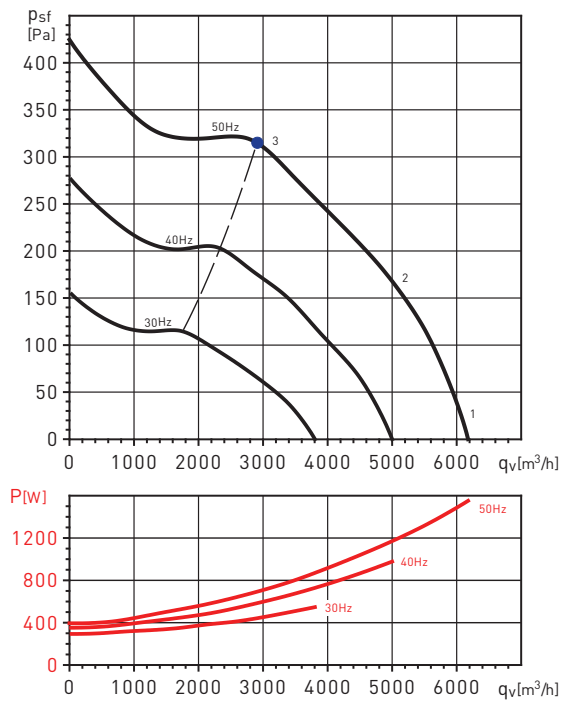
Duty point		63	125	250	500	1000	2000	4000	8000	LwA
1	Inlet	48	57	66	65	66	64	59	49	72
	Outlet	48	57	67	73	76	74	70	62	80
	Radiated	48	54	59	59	56	51	44	35	64
2	Inlet	44	53	62	61	62	60	55	45	68
	Outlet	44	53	63	69	72	70	66	58	76
	Radiated	44	50	55	55	52	47	40	31	60
3	Inlet	41	50	59	58	59	57	52	42	65
	Outlet	41	50	60	66	69	67	63	55	73
	Radiated	41	47	52	52	49	44	37	28	57

Duty point		63	125	250	500	1000	2000	4000	8000	LwA
1	Inlet	52	61	70	69	70	68	63	53	76
	Outlet	52	61	71	77	80	78	74	66	84
	Radiated	52	58	63	63	60	55	48	39	68
2	Inlet	46	55	64	63	64	62	57	47	70
	Outlet	46	55	65	71	74	72	68	60	78
	Radiated	46	52	57	57	54	49	42	33	62
3	Inlet	44	53	62	61	62	60	55	45	68
	Outlet	44	53	63	69	72	70	66	58	76
	Radiated	44	50	55	55	52	47	40	31	60

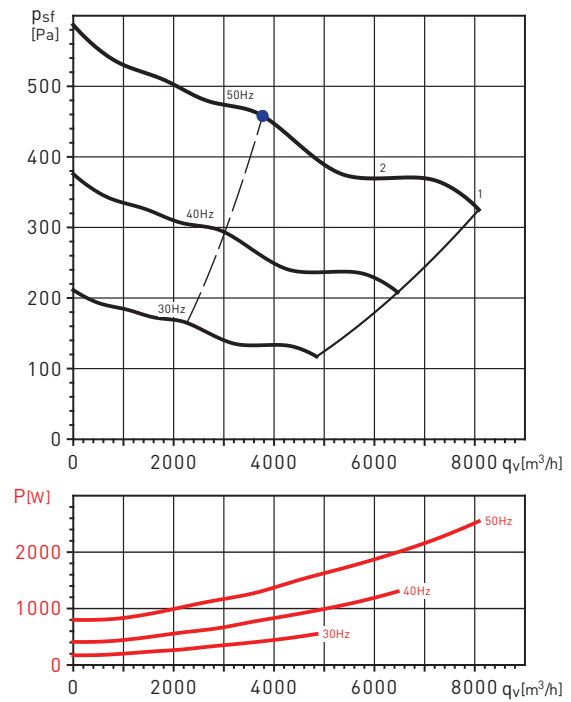
PERFORMANCE CURVES

- q_v : Airflow in m^3/h .
- p_{sf} : Static pressure in Pa.
- Dry air at 20°C and 760 mmHg.
- Sound power levels (LwA dB(A)).
- Performance data in accordance with ISO 5801 and AMCA 210-99 Standards.

CVT-320/240 NT 1100W EXPORT



CVT-380/380 NT 2200W EXPORT



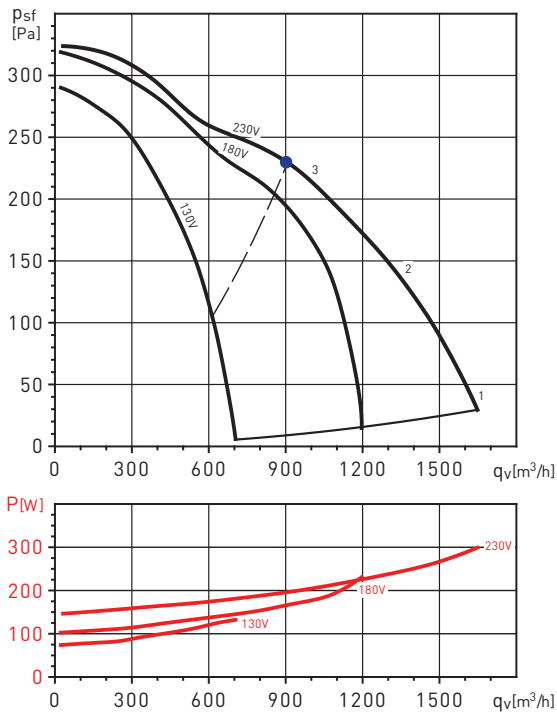
Duty point		63	125	250	500	1000	2000	4000	8000	LwA
1	Inlet	53	62	71	70	71	69	64	54	77
	Outlet	53	62	72	78	81	79	75	67	85
	Radiated	53	59	64	64	61	56	49	40	69
2	Inlet	49	58	67	66	67	65	60	50	73
	Outlet	49	58	68	74	77	75	71	63	81
	Radiated	49	55	60	60	57	52	45	36	65
3	Inlet	45	54	63	62	63	61	56	46	69
	Outlet	45	54	64	70	73	71	67	59	77
	Radiated	45	51	56	56	53	48	41	31	61

Duty point		63	125	250	500	1000	2000	4000	8000	LwA
1	Inlet	54	63	72	71	72	70	65	55	78
	Outlet	54	63	73	79	82	80	76	68	86
	Radiated	54	60	65	65	62	57	50	41	70
2	Inlet	52	61	70	69	70	68	63	53	76
	Outlet	52	61	71	77	80	78	74	66	84
	Radiated	52	58	63	63	60	55	48	39	68

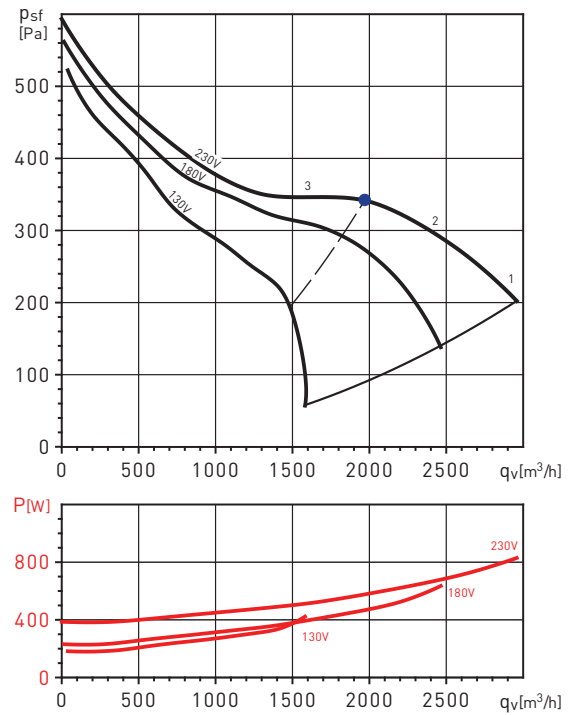
PERFORMANCE CURVES

- q_v : Airflow in m^3/h .
- p_{st} : Static pressure in Pa.
- Dry air at 20°C and 760 mmHg.
- Sound power levels (LwA dB(A)).
- Performance data in accordance with ISO 5801 and AMCA 210-99 Standards.

CVB /4 180/180 RE 147W EXPORT



CVB /4 240/240 NT 373W EXPORT



Duty point		63	125	250	500	1000	2000	4000	8000	LwA
1	Inlet	46	53	58	58	62	60	55	47	66
	Outlet	46	53	59	66	72	70	66	60	75
	Radiated	46	50	51	52	52	47	40	33	58
2	Inlet	47	54	59	59	63	61	56	48	67
	Outlet	47	54	60	67	73	71	67	61	76
	Radiated	47	51	52	53	53	48	41	34	59
3	Inlet	47	54	59	59	63	61	56	48	67
	Outlet	47	54	60	67	73	71	67	61	76
	Radiated	47	51	52	53	53	48	41	34	59

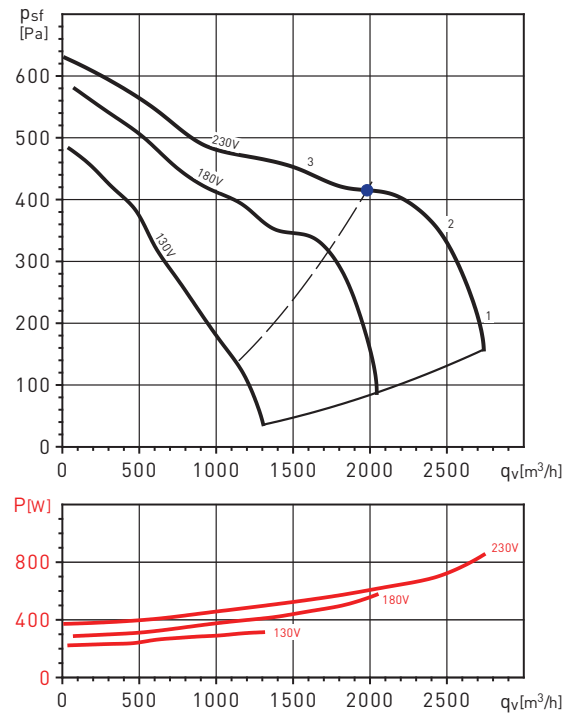
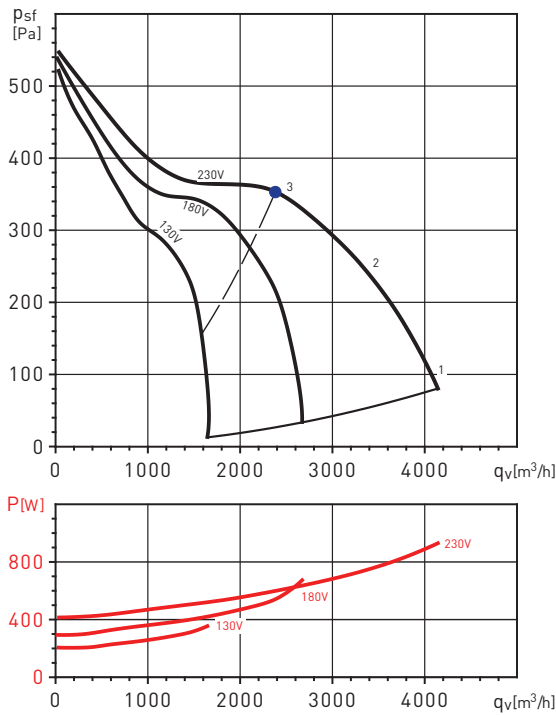
Duty point		63	125	250	500	1000	2000	4000	8000	LwA
1	Inlet	49	58	67	66	67	65	60	50	73
	Outlet	49	58	68	74	77	75	71	63	81
	Radiated	49	55	60	60	57	52	45	36	65
2	Inlet	48	57	66	65	66	64	59	49	72
	Outlet	48	57	67	73	76	74	70	62	80
	Radiated	48	54	59	59	56	51	44	35	64
3	Inlet	47	56	65	64	65	63	58	48	71
	Outlet	47	56	66	72	75	73	69	61	79
	Radiated	47	53	58	58	55	50	43	34	63

PERFORMANCE CURVES

- q_v : Airflow in m^3/h .
- p_{sf} : Static pressure in Pa.
- Dry air at 20°C and 760 mmHg.
- Sound power levels (LwA dB(A)).
- Performance data in accordance with ISO 5801 and AMCA 210-99 Standards.

CVB/4-240/240 NT 550W EXPORT

CVB/4-270/200 N 373W EXPORT



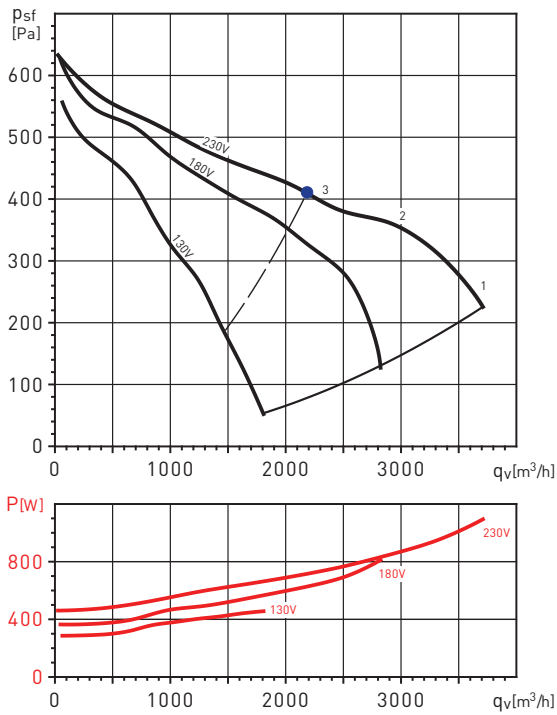
Duty point		63	125	250	500	1000	2000	4000	8000	LwA
1	Inlet	55	64	73	72	73	71	66	56	79
	Outlet	55	64	74	80	83	81	77	69	87
	Radiated	55	61	66	66	63	58	51	42	71
2	Inlet	52	61	70	69	70	68	63	53	76
	Outlet	52	61	71	77	80	78	74	66	84
	Radiated	52	58	63	63	60	55	48	39	68
3	Inlet	48	57	66	65	66	64	59	49	72
	Outlet	48	57	67	73	76	74	70	62	80
	Radiated	48	54	59	59	56	51	44	35	64

Duty point		63	125	250	500	1000	2000	4000	8000	LwA
1	Inlet	44	53	62	61	62	60	55	45	68
	Outlet	44	53	63	69	72	70	66	58	76
	Radiated	44	50	55	55	52	47	40	31	60
2	Inlet	46	55	64	63	64	62	57	47	70
	Outlet	46	55	65	71	74	72	68	60	78
	Radiated	46	52	57	57	54	49	42	33	62
3	Inlet	47	56	65	64	65	63	58	48	71
	Outlet	47	56	66	72	75	73	69	61	79
	Radiated	47	53	58	58	55	50	43	34	63

PERFORMANCE CURVES

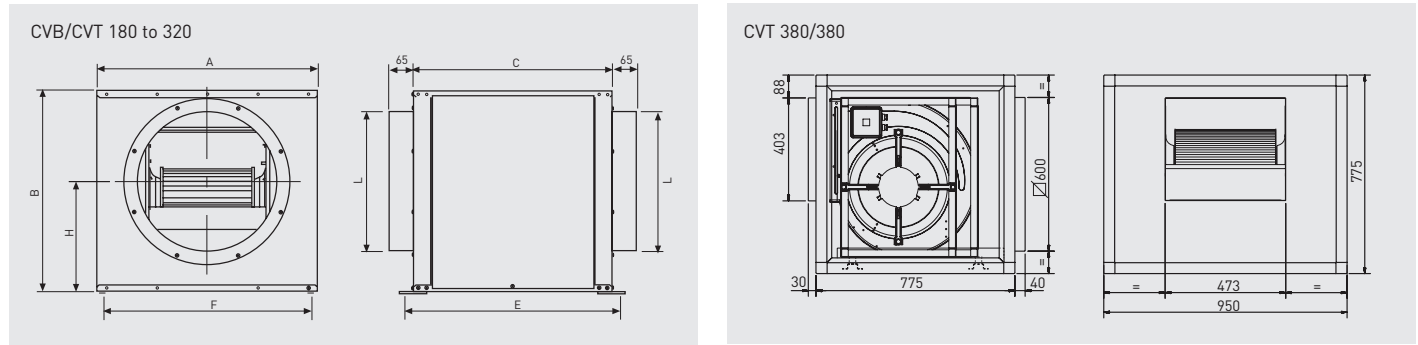
- q_v : Airflow in m^3/h .
- p_{st} : Static pressure in Pa.
- Dry air at 20°C and 760 mmHg.
- Sound power levels (LwA dB(A)).
- Performance data in accordance with ISO 5801 and AMCA 210-99 Standards.

CVB/4-270/270 N 550W EXPORT



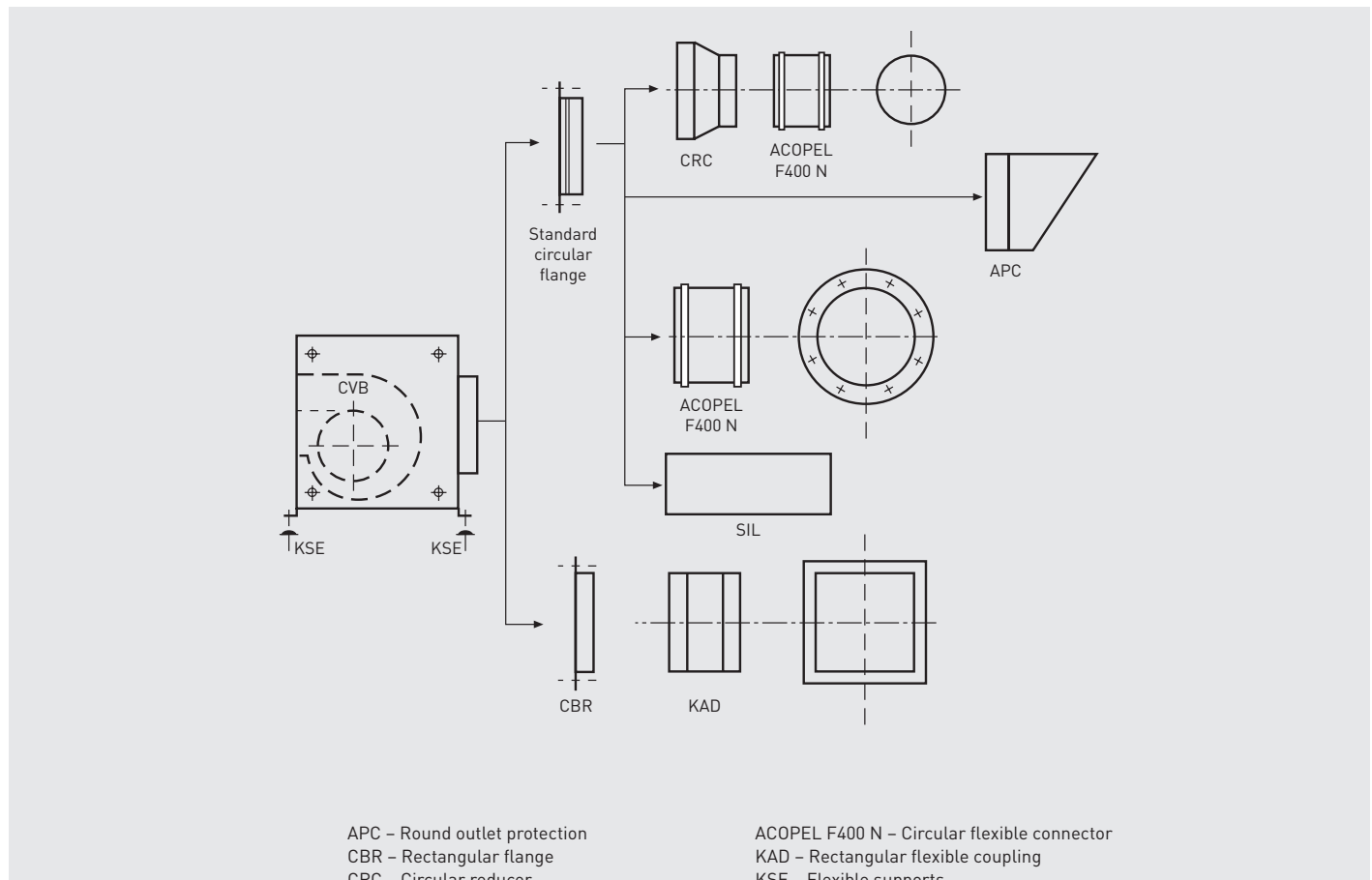
Duty point		63	125	250	500	1000	2000	4000	8000	LwA
1	Inlet	49	58	67	66	67	65	60	50	73
	Outlet	49	58	68	74	77	75	71	63	81
	Radiated	49	55	60	60	57	52	45	36	65
2	Inlet	48	57	66	65	66	64	59	49	72
	Outlet	48	57	67	73	76	74	70	62	80
	Radiated	48	54	59	59	56	51	44	35	64
3	Inlet	47	56	65	64	65	63	58	48	71
	Outlet	47	56	66	72	75	73	69	61	79
	Radiated	47	53	58	58	55	50	43	34	63

DIMENSIONS (mm)



Model	A	B	C	G	J	K	Ø L	H
180/180	455	441	408	325	436	422	250	245
240/180	565	521	508	400	536	532	355	282
240/240	565	521	508	400	536	532	355	282
270/200	605	581	558	450	586	572	400	322
270/270	605	581	558	450	586	572	400	322
320/240	685	669	608	500	636	652	500	376

MOUNTING OPTIONS



MOUNTING ACCESSORIES



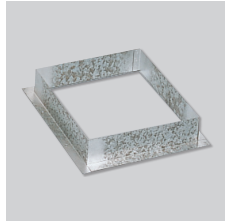
MBE
Electric heater.



MBW
Hot water coil.



SIL
Sound attenuators.



CBR
Rectangular duct connectors
Can be used instead of the circular spigots supplied as standard.

Box Model	CBR Model	CBR Dimensions (mm)
CVB-180/180	CBR-180 x 180	233 X 222
CVB-240/180	CBR 240 x 180	233 X 260
CVB-240/240	CBR 240 x 240	300 X 260
CVB-270/200	CBR 270 x 200	265 X 289
CVB-270/270	CBR 270 x 270	334 X 289
CVB-320/240	CBR 320 x 240	309 X 341



CRC
Circular reducers
To enable the connection of a smaller diameter ducting.

Box Model	CRC Models		
CVB-180	CRC - 250/200	-	
CVB-240	CRC - 355/315	CRC - 355/250	
CVB-270	CRC - 400/355	CRC - 400/315	CRC - 400/250
CVB / T-320	CRC - 500/450	CRC - 500/400	CRC - 500/315



ACOPEL F400 N
Circular flexible connector.

Box Model	ACOPEL F400 N Model		
	Supply and extraction air		
CVB-180	ACOPEL F400-250/160N		
CVB-240	ACOPEL F400-355/160N		
CVB-270	ACOPEL F400-400/160N		
CVB/T-320	ACOPEL F400-500/160N		



KSE
Flexible supports
Rubber anti-vibration mounts to reduce vibration and noise transmission to the installation.
(1KSE = set of 4 supports per bag)

Box Model	Type KSE
CVB-180	KSE-45
CVB-240	KSE-45
CVB-270	KSE-45
CVB / T-320	KSE-45



APC
Round outlet guards
Discharge protection guards for direct connection to the inlet-outlet flange (please see pages. Mounting Accessories)

Box Model	APC Model	Nominal Ø
CVB-180	APC-250	250
CVB-240	APC-355	355
CVB-270	APC-400	400
CVB/T-320	APC-500	500

ELECTRICAL ACCESSORIES



REB
Single phase
electronic speed
controllers.



RMB
Single phase auto
transformer speed
controllers.



**PARO/MARCHA
5P and 8P**
Electrical isolation
switch.
- Switch ON-OFF 5P
- Switch ON-OFF 8P



REB-5
Single phase
electronic speed
controllers.



VFKB IP65
Adjustable
frequency drives for
three phase motors
from 0,37 to 4 kW
230 V or 400 V.



VFTM IP54
Adjustable frequency
drives for three
phase motors from
0,37 to 15 kW.