

ERGOVENT

frameless
air diffusers



No visible edges!
Smooth and solid ceiling!

ERGOVENT diffuser is made of gypsum. It is integrated into the drywall ceiling, then finished and painted with the same paint and color as the ceiling. Only an minimalistic ring-shaped slot for the air flow remains visible.

Everyone has been talking about it for a long time.
Now this real and a new trend!



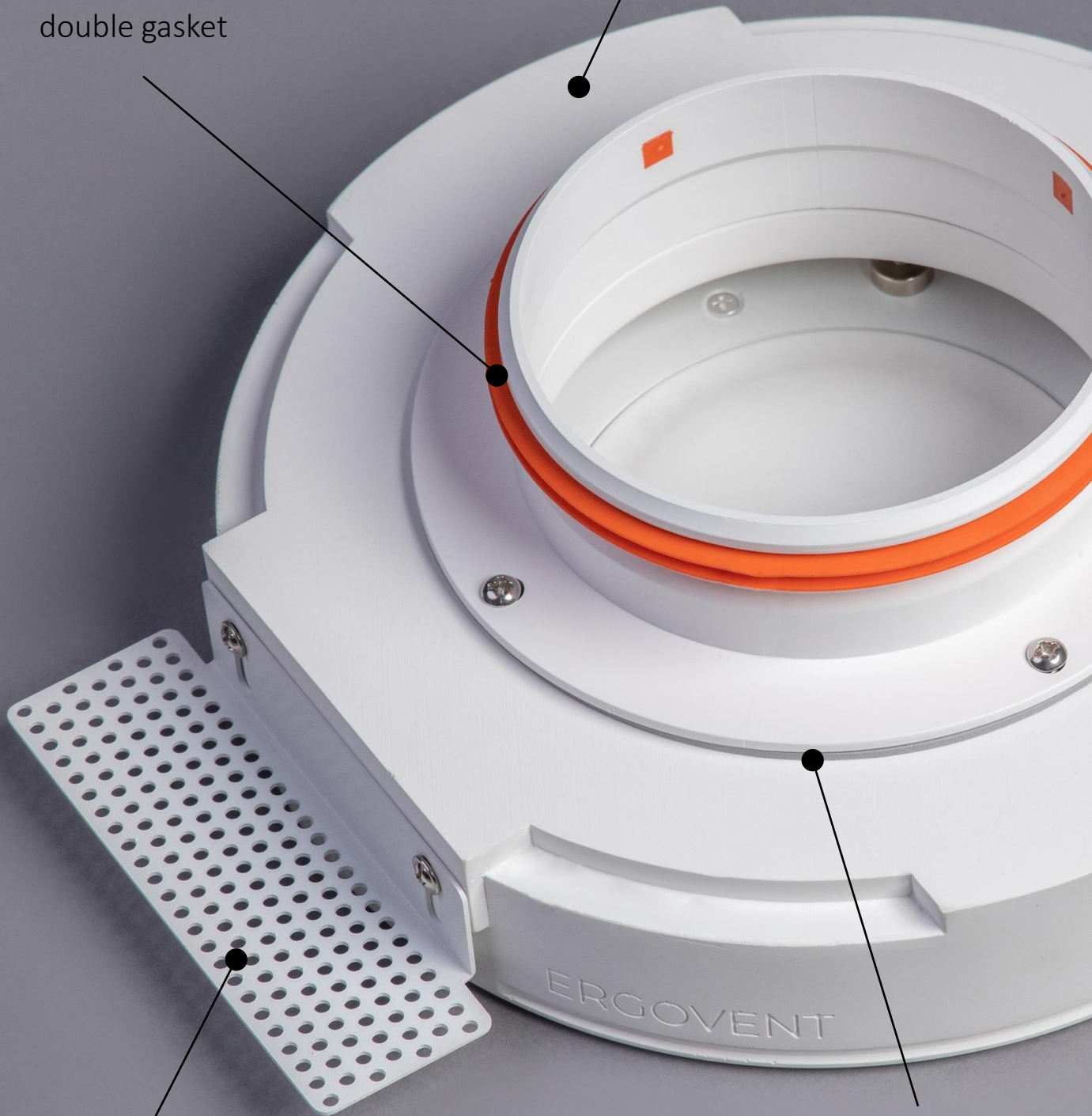
ERGOVENT - a diffuser perfected down to the smallest detail.

Specialists choose ERGOVENT due to the guaranteed technical parameters, clear and fast installation. End buyers value stunning look, quiet and safe operation.



High quality, homogeneous gypsum body (without any drilling and gluing)

100 / 125 / 160 mm duct connectors with a double gasket

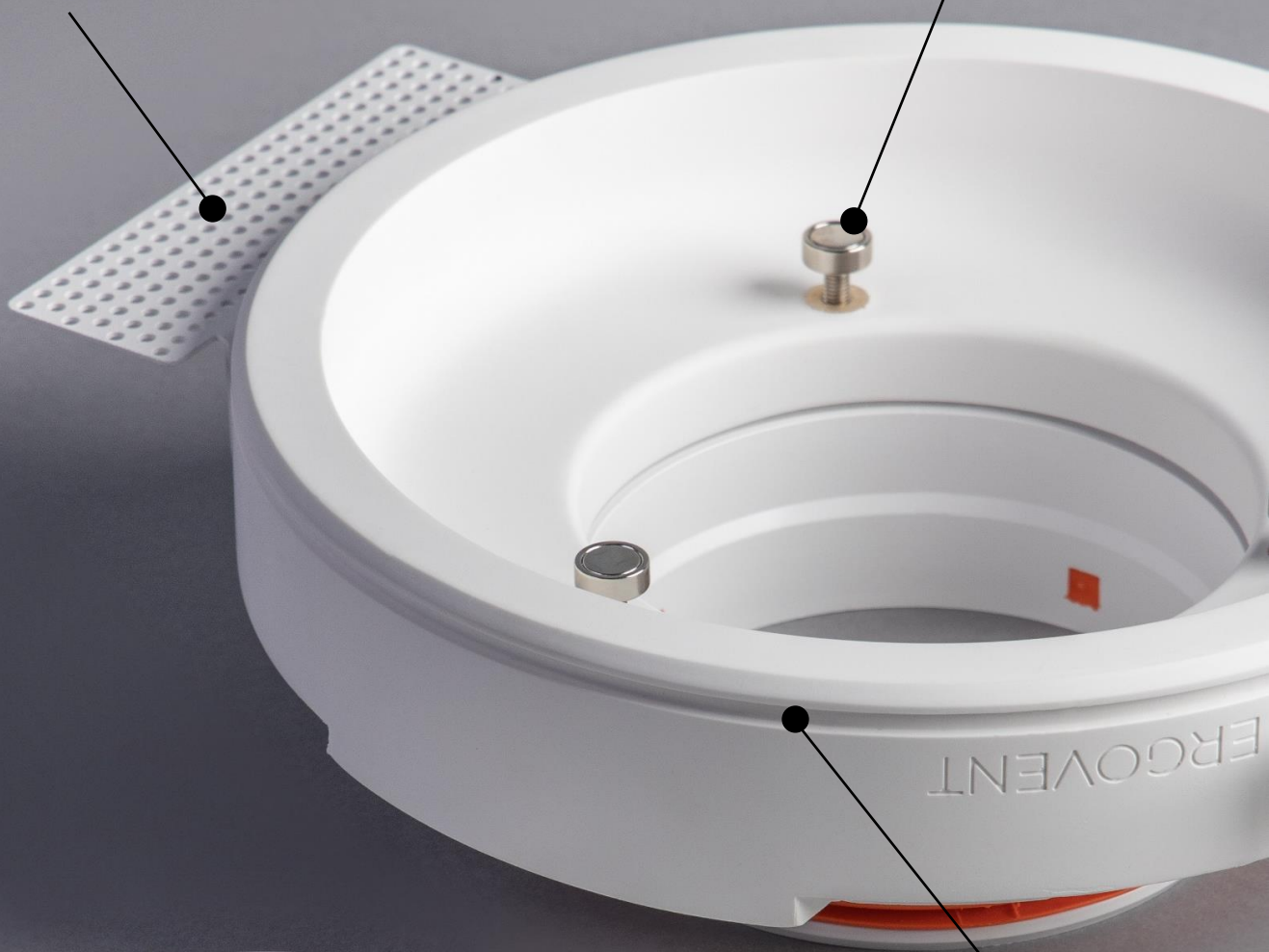


Side fasteners are easy to customize for any drywall thickness

Anti – vibration gasket between the body and the connector

Convenient fastening for
1 or 2 layers of gypsum

Reliable magnetic holders



Groove for putty



Magnetized stainless
steel cap holder

Aerodynamic sphere reducing air vortices



Premium quality
and extremely safe
packaging



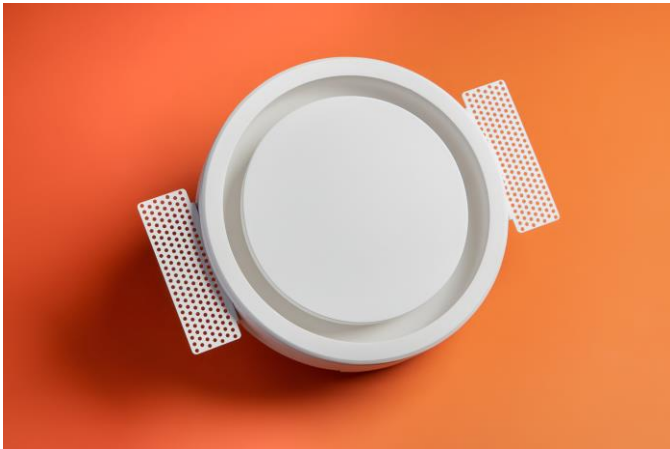
Assortment

The range of ERGOVENT diffusers includes round (RONDO) and square (KVADRO) models. RONDO models are available in 100 mm, 125 mm and 160 mm duct connection diameters. KVADRO models are available in 100 mm and 125 mm duct connection diameters.

RONDO 100 / 125



RONDO 160

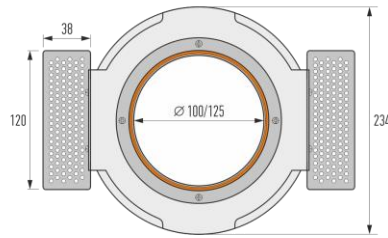
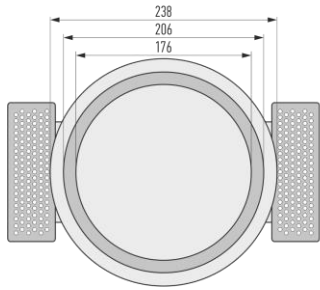


KVADRO 100 / 125

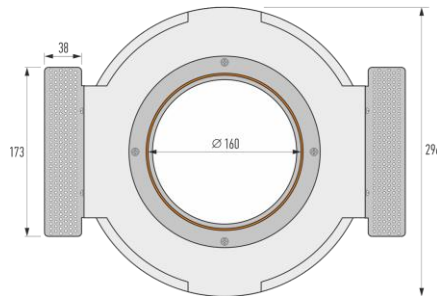
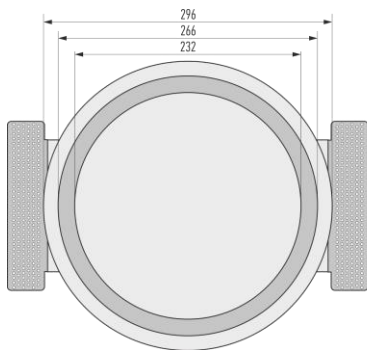
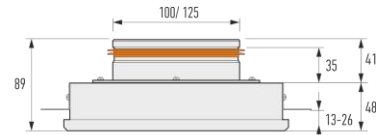


Parameters and schematics

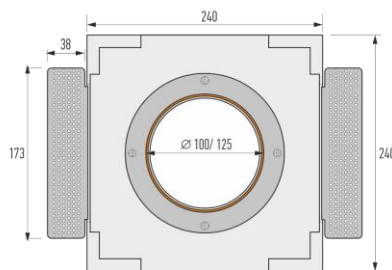
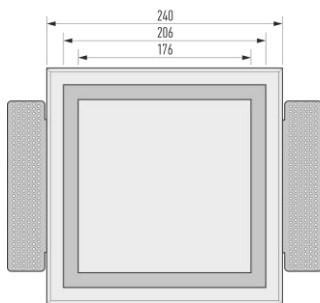
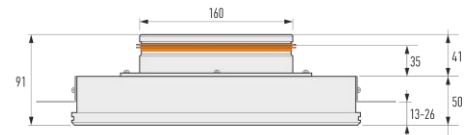
	RONDO-100	RONDO-125	RONDO-160	KVADRO-100	KVADRO-125
Product code	RN100	RN125	RN160	KV100	KV125
Duct connection diameter	100 mm	125 mm	160 mm	100 mm	125 mm
Body height	50 mm	50 mm	50 mm	50 mm	50 mm
Height with connector	90 mm	90 mm	90 mm	90 mm	90 mm
Body diameter	238 mm	238 mm	300 mm	238 x 238 mm	238 x 238mm
Shape	Round	Round	Round	Square	Square
Recommended airflow m ³ /h	up to 80 m ³ /h per diffuser	up to 80 m ³ /h per diffuser	up to 100 m ³ /h per diffuser	up to 80 m ³ /h per diffuser	up to 80 m ³ /h per diffuser
Air flow	Supply / Extraction	Supply / Extraction	Supply / Extraction	Supply / Extraction	Supply / Extraction



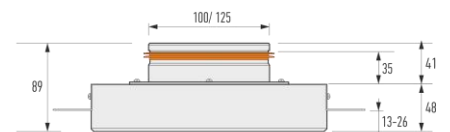
RONDO-100 / RONDO-125



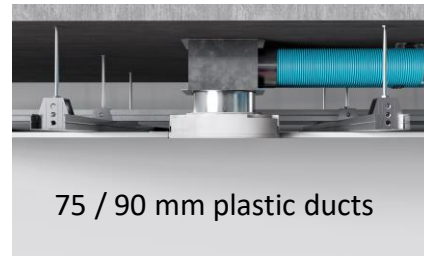
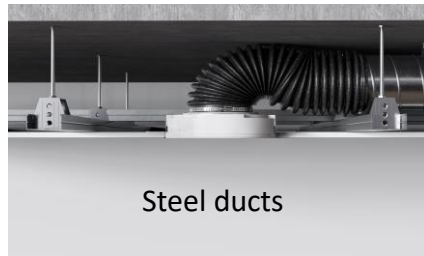
RONDO-160



KVADRO-100 / KVADRO-125



Connection methods

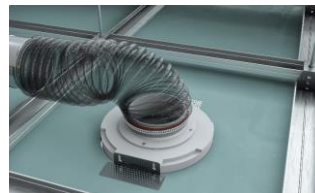
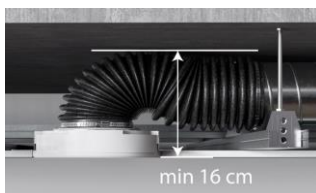


DUCT SYSTEM: steel duct

- 1 Directly into the steel duct

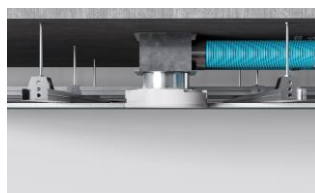
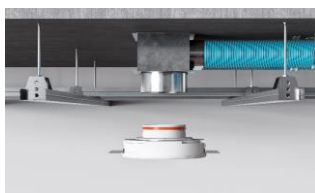
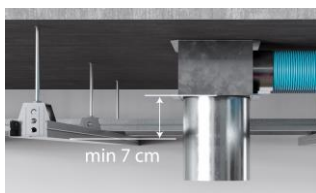


- 2 Using a flexible soft duct

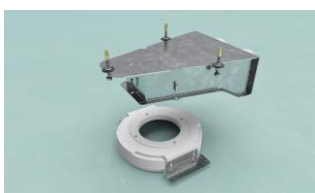


DUCT SYSTEM: flexible plastic 75 mm / 90 mm ducts

- 3 Using the plenum box



- 4 Using a special ERGOVENT low-profile box, which saves ceiling height.
The ceiling is lowered by only 14 cm

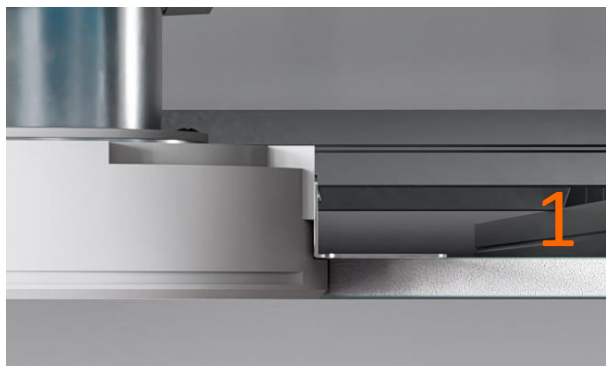
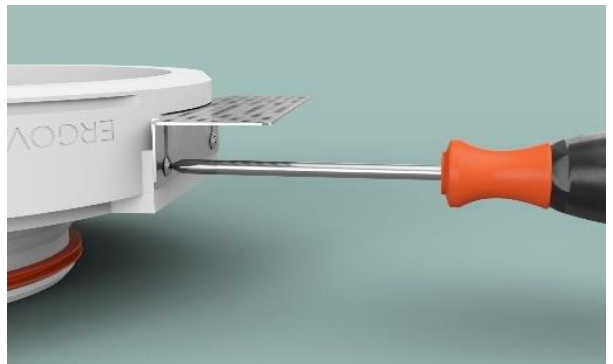


Easy and convenient installation

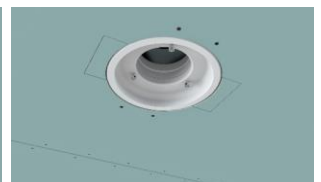
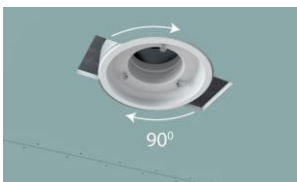
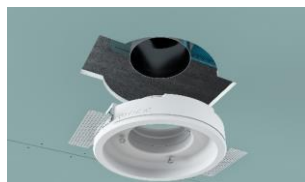
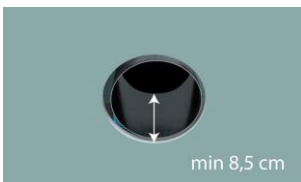
The diffuser is fastened to the gypsum board with self-tapping screws. Screws are screwed through the drywall to the side fasteners.



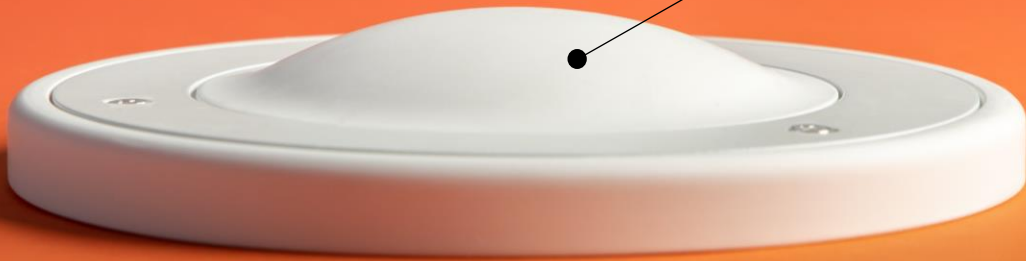
The fastening elements are adjustable and instantly could be applied to 1 or 2 layers of gypsum (if necessary, to any non-standard thickness of gypsum board).



It is possible to install an ERGOVENT diffuser even if the drywall ceiling is already installed and the connection is provided via a steel or plastic duct. Just a few extra steps will be needed.



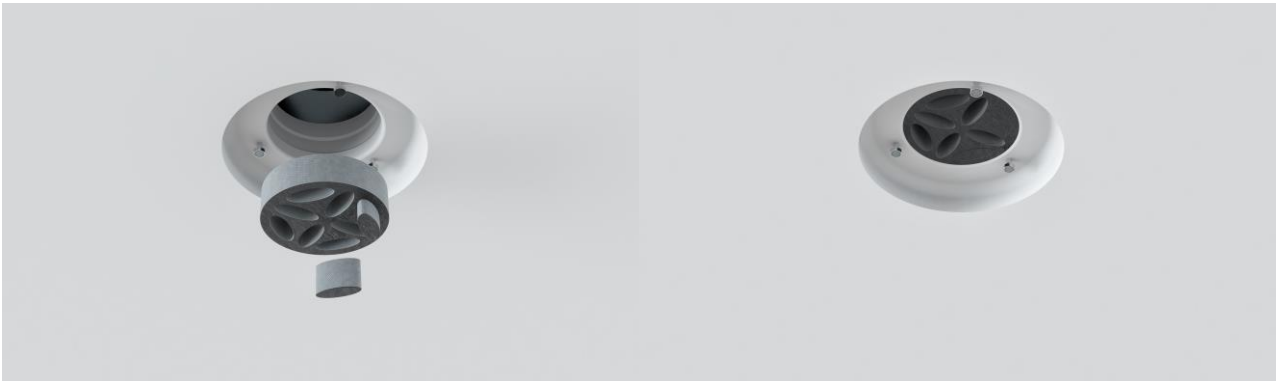
Unique aerodynamics



The diffuser was designed in collaboration with scientists, using computer simulations. Various geometric modifications have been tested for the best aerodynamic properties. One of them is a special half sphere protrusion in the central cap, which effectively reduces air vortices and airflow resistance.

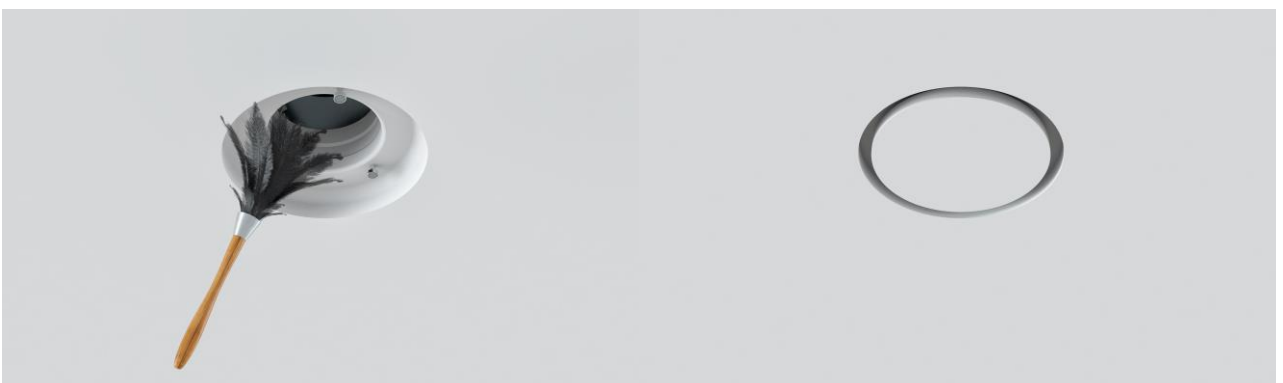
Airflow regulation

The diffuser cap must always be even with the ceiling. If it is necessary to regulate the airflow, polyurethane dampers are used. You can insert the flexible damper into the diffuser connector at any time. The airflow is balanced by changing the number of removable segments.



No dirt on the ceiling!

A dust ring tends to form around old type diffusers due to airflow direction and particle static qualities. The airflow of the frameless diffuser is directed straight down and anti-static qualities of gypsum prevents any dust particle formations, so the **ceiling will always be clean**. Maintenance can be performed if necessary by opening the central cap.





Diffusers are **created in Lithuania** by ERGOVENT JSC.
Contact us if You are interested in distributing these products.

ERGOVENT JSC

Panerių 246, Kaunas
48454 Lithuania

Contact person:

Head of sales
Kęstutis Bražėnas
+370 683 88044
sales@ergovent.com
www.ergovent.com