

KVR 10050 EC 30

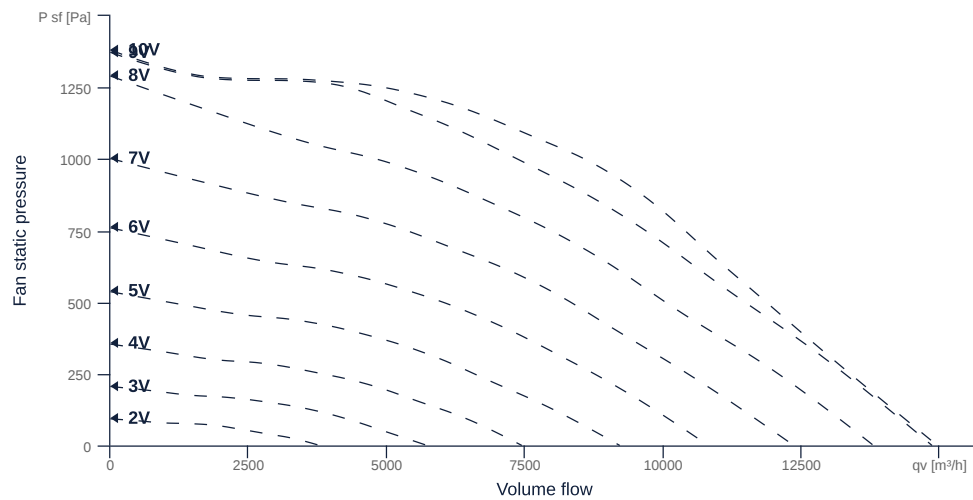
131373

- Backward curved radial impeller
- Removable fan unit
- Housing made of galvanized sheet steel
- High efficiency EC motor, steplessly controllable
- Conveyed medium temperature up to 60 °C in continuous operation



MAP

Name	Value	Unit
Volume flow	0	m³/h
Pressure	0	Pa



zur Produktseite

KVR 10050 EC 30

131373

ruck

GENERAL DATA

Name	Value	Unit	Formula symbol
ERP conformity	Yes		
Certifications	CE, UKCA		
Duct size	1000x500		WxH _{duct}
Pipe connection size (DN)	-		DN
Rated voltage (entire device)	400	V	U _{rated}
Phases (entire device)	3~		phase
Electrical protection (entire device)	6 A		fuse
Housing material	Galvanized steel		mat _{casing}
Impeller material	Plastic		mat _{impeller}
Weight	66	kg	m
Nominal air flow rate, nominal point m ³ /h	7441.2	m ³ /h	q _{v,nom}
Nominal external pressure, static	691.6	Pa	p _{s,nom}
Fan type	Radial		Fan _{type}
Category / Installation situation	A		cat

ERP DATA (LOT 6)

Name	Value	Unit	Formula symbol
Nominal air flow rate, nominal point m ³ /s	2.07	m ³ /s	q _{v,nom}
Actual electrical input power, nominal point	2.08	kW	P _{e,nom}
Face velocity, nominal point	4.1	m/s	v _{nom}
Nominal external pressure, static	691.6	Pa	p _{s,nom}
supply air fan static efficiency, nominal point	67.7	%	η _{es,SUP}
Enclosure sound level, nominal point	84	dB(A)	L _{WA2}
Rating	Product is compliant 2018		

MAXIMAL DATA

Name	Value		Unit	Formula symbol
	50 Hz	60 Hz		
Max. power consumption (device)	3490	3490	W	P _{ed,max}
Max. operating current (device)	5.31	5.31	A	I _{ed,max}
Max. speed	1790	1790	1/min	n _{max}
Max. stat. efficiency	64.3	64.3	%	η _{es}
Max. fan efficiency	65.3	65.3	%	η _e
Max. flowrate	14960	14960	m ³ /h	q _{v,max}
Max. stat pressure	1380	1380	Pa	p _{sf,max}
Max. medium temperature	60	60	°C	T _{m,max}
Max. environment temperature	60	60	°C	T _{amb,max}
Min. environment temperature	-30	-30	°C	T _{amb,min}

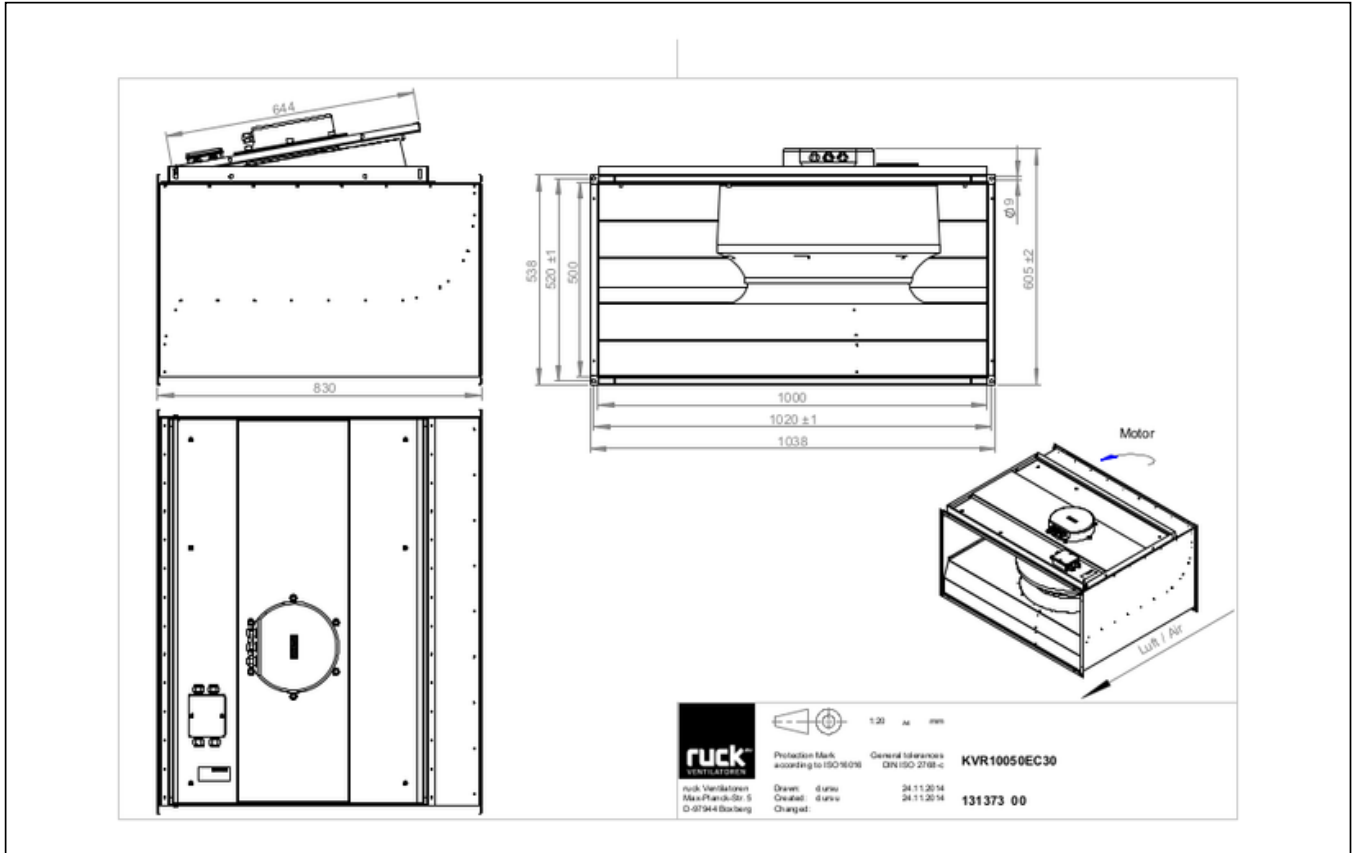


zur Produktseite

KVR 10050 EC 30

131373

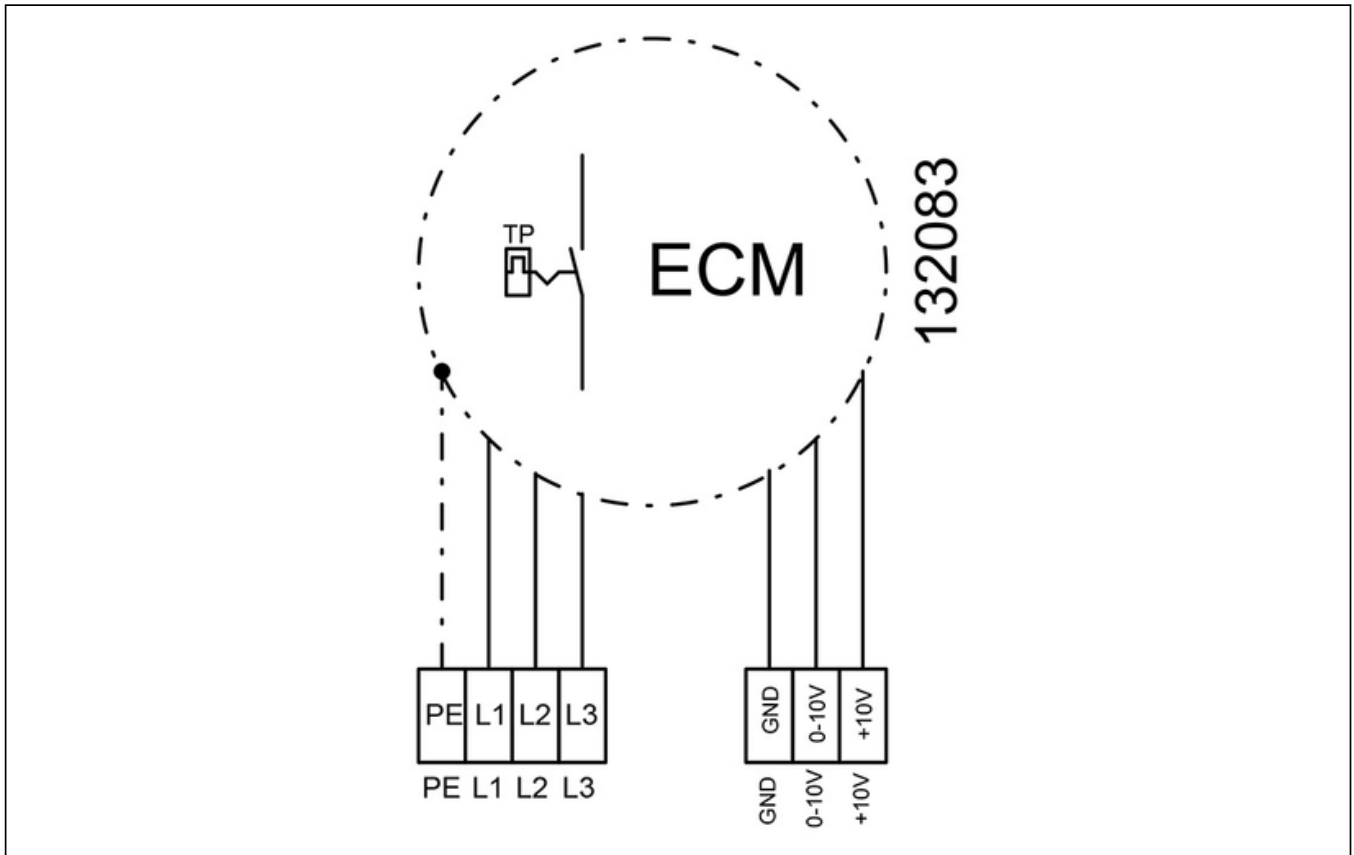
SCHALTPLÄNE / MASSZEICHNUNGEN



zur Produktseite

KVR 10050 EC 30

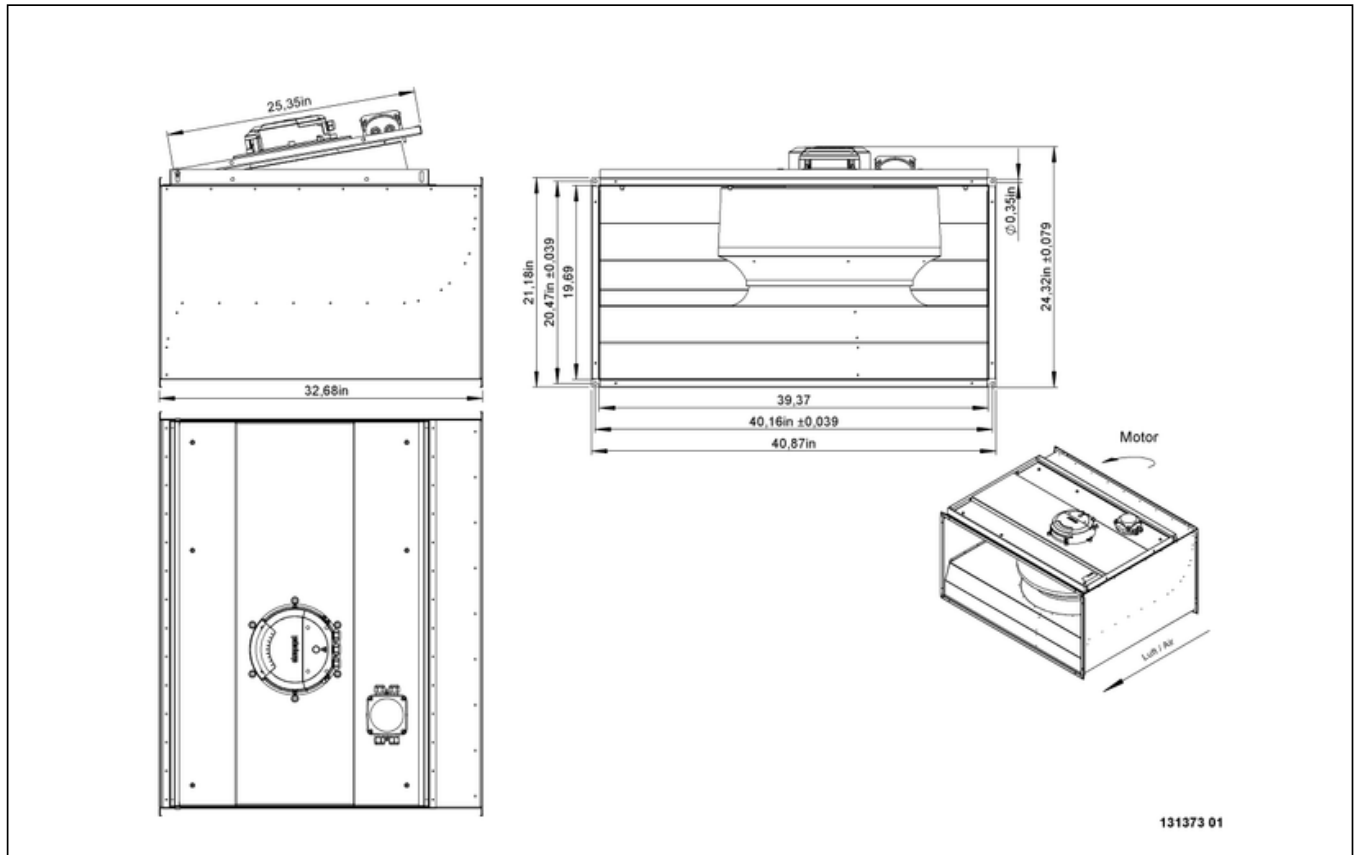
131373



zur Produktseite

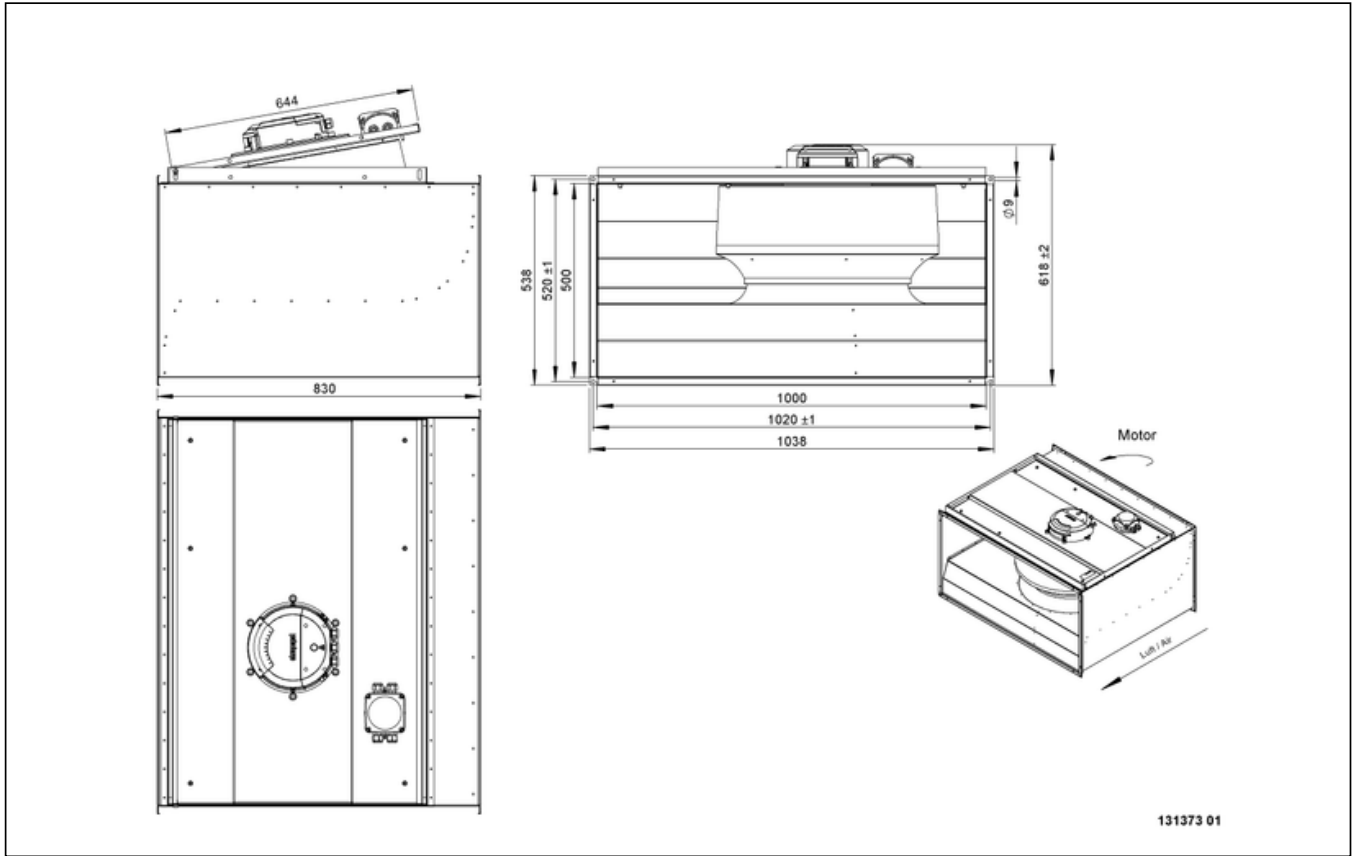
KVR 10050 EC 30

131373



KVR 10050 EC 30

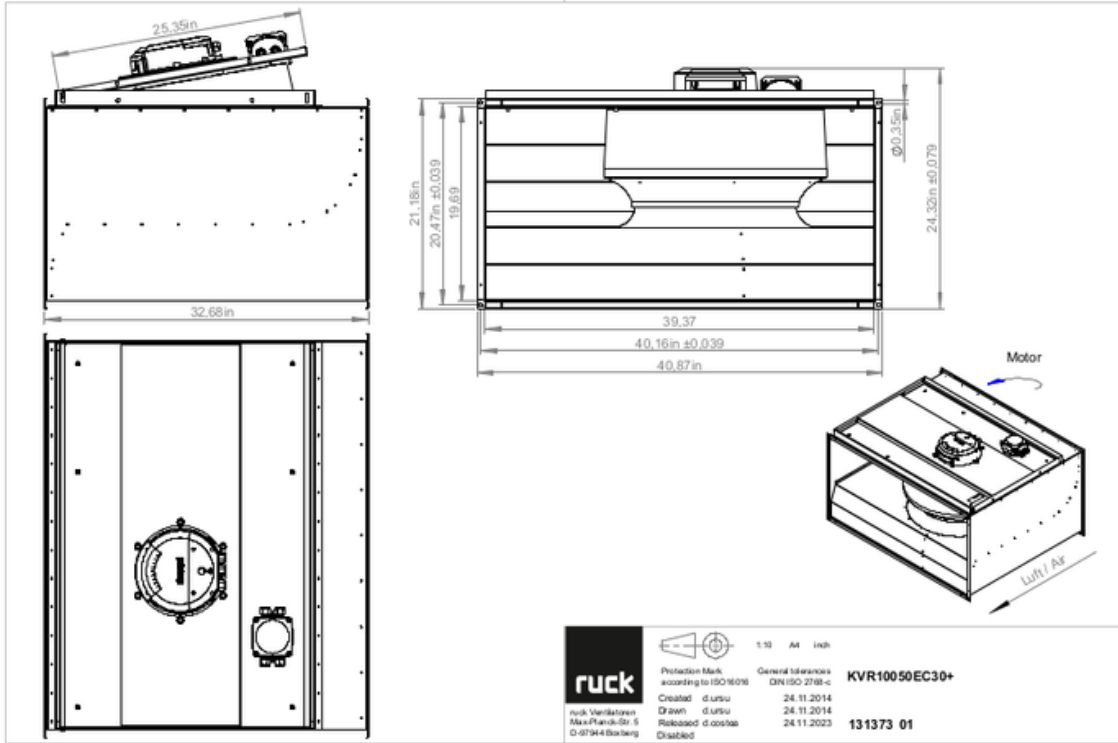
131373



zur Produktseite

KVR 10050 EC 30

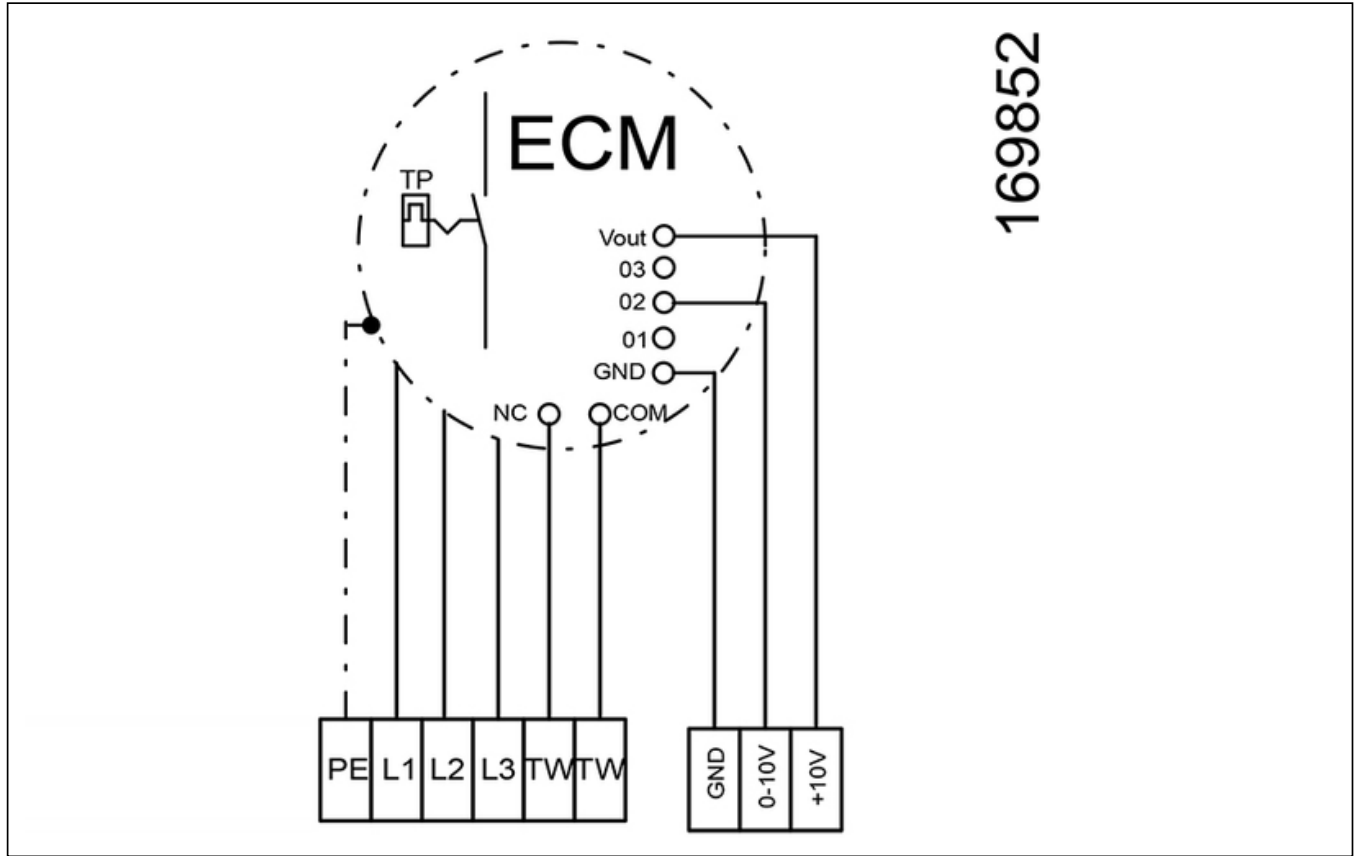
131373



zur Produktseite

KVR 10050 EC 30

131373



MECHANICAL ACCESSORIES

VKK 10050 | 103946



- Automatic shutter
- Plastic, weather resistant
- Temperature resistant up to 70 °C

VS 10050 | 103956



- Duct connector, flexible
- Standard profile flange P20
- Galvanized steel sheet, plastic band (PVC)
- Temperature resistant up to 70 °C



zur Produktseite

KVR 10050 EC 30

131373

ELECTRICAL ACCESSORIES

GS 03 | 107633



- Device switch
- $U_{max} = 400\text{ V}$, $I_{max} = 25\text{ A}$
- Switching capacity $400\text{ V } 3\text{-} = 5,5\text{ kW}$
- Protection class IP 55

CON P1000 | 115259



- Constant pressure control
- Actual value display possible via optional control unit
- Output 0-10 V DC + FC enable + setpoint reached
- Pressure setting by means of decade switch

MTP 20 | 128146



- Potentiometer 10 k Ω
- Switching contact 1A/250V AC - 2,5A/12V DC
- Max. ambient temperature 50 °C
- VDE

MTP 30 | 143289



- Stepped potentiometer 10 k Ω
- Step 1 + 2 settable 10 % - 100 % Vdc
- Step 3 100 % Vdc
- Supply voltage +10 Vdc

MTP 40 | 147359



- Potentiometer 10 k Ω
- Connection in terminal box
- Max. ambient temperature 50 °C
- PU: 20 pieces

MTP 50 | 153133



- Potentiometer with multifunction output
- 230 VAC $\pm 10\%$ / 50-60 Hz
- Selectable output: 1-10 VDC / 2-20 mA / 10-100 % PWM
- Min. and max. output value adjustable



zur Produktseite