

Technical Data Sheet

CODE 42210

MPC-E 304 M

Medium-pressure long cased axial fans



Certifications

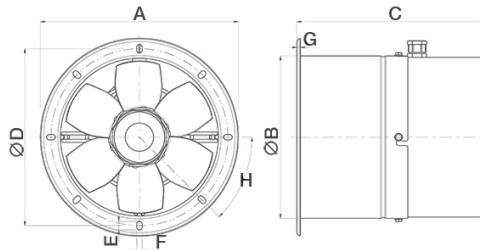
CE CE

EAC EAC

TECHNICAL AND PERFORMANCE DATA

Frequency (Hz)	50	Number of poles	4
Insulation class	I°	Voltage (V)	230
IP	X4	Weight (Kg)	10,2
Max absorbed current (A)	0,50	Max airflow (l/s)	600
Max absorbed power (W)	110	Max airflow (m³/h)	2160
Max ambient temperature for continuous operation (°C)	70	Max pressure (mmH2O)	10,1
Min continuous operation room temperature (°C)	-25	Max pressure (Pa)	99
Motor ATEX marking	55	RPM	1390
Nominal diameter (mm)	300	Sound power Lw [dB(A)]	55,3
Number of phases (Ph)	1	Sound pressure Lp [dB (A)] at 3 m	34,8

DIMENSIONS



Size A (mm)	Ø 393
Size B (mm)	Ø 316
Size C (mm)	330
Size D (mm)	Ø 366
Size E (mm)	14
Size F (mm)	9
Size G (mm)	4
Size H (mm)	45°

PER INFORMAZIONI / FOR INFORMATION

ITALY

Pre Sales:
prevendita@vortice-italy.com
After Sales:
postvendita@vortice-italy.com

UNITED KINGDOM & REP. OF

IRELAND
Sales Dept:
sales@vortice.ltd.uk
Technical Dept:
technical@vortice.ltd.uk

OTHER COUNTRIES

Sales Dept:
export@vortice-italy.com
After Sales:
after-sales@vortice-italy.com

Technical Data Sheet

CODE 42210

MPC-E 304 M

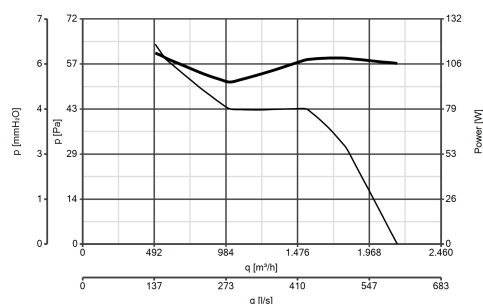
Medium-pressure long cased axial fans



DESCRIPTION

- Nominal diameter 300 mm
- 2 rolled steel flange sections, welded, phosphated and polyester powder coated in practical grey colour with hammered effect finish, guaranteeing long-term resistance to atmospheric agents.
- 1 speed single phase AC motor with shaft turning in double shielded ball bearings, insulation class F.
- Maximum air flow: 2,160 m³/h.
- Impeller with 6 wing profile blades, dynamically balanced (UNI ISO 1940 – Balancing class 6.3), optimized to deliver maximum performance and low noise levels, moulded from filled polypropylene for superior dimensional stability and resistance to atmospheric agents, and keyed to a diecast aluminium hub.
- Vortice speed controller.

CURVES



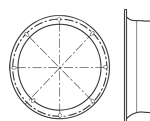
ACCESSORIES



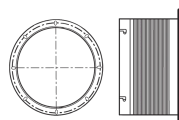
IRM 30
Code 12921



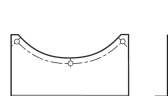
IREM 3 CD
99250080
Code 12931



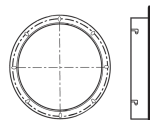
MPC BO 300
(BOCCAGLIO)
Code 22536



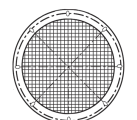
MPC RA 300
(RACCORDO
FLESSIBILE)
Code 22517



MPC SU 300
(SUPPORTO)
Code 22532



MPC FL 300
(FLANGIA)
Code 22524



MPC RP 300
(RETE DI
PROTEZIONE)
Code 22528

PER INFORMAZIONI / FOR INFORMATION

ITALY
Pre Sales:
prevendita@vortice-italy.com
After Sales:
postvendita@vortice-italy.com

UNITED KINGDOM & REP. OF
IRELAND
Sales Dept:
sales@vortice.ltd.uk
Technical Dept:
technical@vortice.ltd.uk

OTHER COUNTRIES
Sales Dept:
export@vortice-italy.com
After Sales:
after-sales@vortice-italy.com