

Technical Data Sheet

CODE 42310

MPC-E 304 T

Medium-pressure long cased axial fans



Certifications

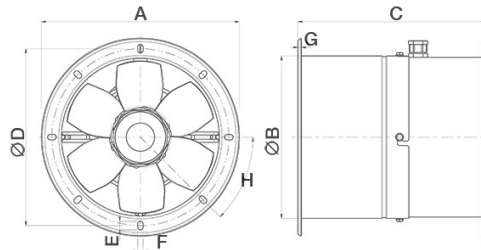
CE CE

EAC EAC

TECHNICAL AND PERFORMANCE DATA

Frequency (Hz)	50	Number of poles	4
Insulation class	I°	Voltage (V)	400
IP	X4	Weight (Kg)	10,2
Max absorbed current (A)	0,24	Max airflow (l/s)	625
Max absorbed power (W)	107	Max airflow (m³/h)	2250
Max ambient temperature for continuous operation (°C)	70	Max pressure (mmH2O)	10,4
Min continuous operation room temperature (°C)	-25	Max pressure (Pa)	102
Motor ATEX marking	55	RPM	1400
Nominal diameter (mm)	300	Sound power Lw [dB(A)]	55,3
Number of phases (Ph)	3	Sound pressure Lp [dB (A)] at 3 m	34,8

DIMENSIONS



Size A (mm)	∅ 393
Size B (mm)	∅ 316
Size C (mm)	330
Size D (mm)	∅ 366
Size E (mm)	14
Size F (mm)	9
Size G (mm)	4
Size H (mm)	45°

PER INFORMAZIONI / FOR INFORMATION

ITALY

Pre Sales:
prevendita@vortice-italy.com
After Sales:
postvendita@vortice-italy.com

UNITED KINGDOM & REP. OF

IRELAND
Sales Dept:
sales@vortice.ltd.uk
Technical Dept:
technical@vortice.ltd.uk

OTHER COUNTRIES

Sales Dept:
export@vortice-italy.com
After Sales:
after-sales@vortice-italy.com

Technical Data Sheet

CODE 42310

MPC-E 304 T

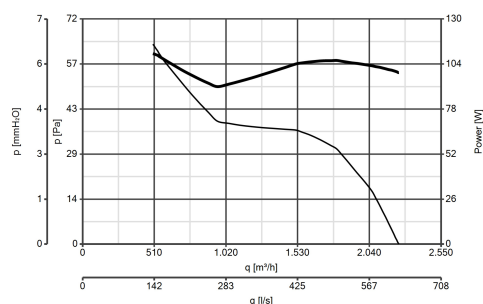
Medium-pressure long cased axial fans



DESCRIPTION

- Nominal diameter 300 mm
- 2 rolled steel flange sections, welded, phosphated and polyester powder coated in practical grey colour with hammered effect finish, guaranteeing long-term resistance to atmospheric agents.
- 1 speed three-phase AC motor with shaft turning in double shielded ball bearings, insulation class F.
- Maximum air flow: 2,250 m³/h.
- Impeller with 6 wing profile blades, dynamically balanced (UNI ISO 1940 – Balancing class 6.3), optimized to deliver maximum performance and low noise levels, moulded from filled polypropylene for superior dimensional stability and resistance to atmospheric agents, and keyed to a diecast aluminium hub.
- Vortice speed controller.

CURVES



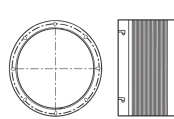
ACCESSORIES



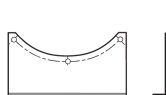
IRT 15
Code 12923



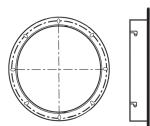
IRET 6
Code 12934



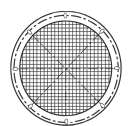
**MPC RA 300
(RACCORDO
FLESSIBILE)**
Code 22517



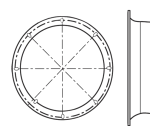
**MPC SU 300
(SUPPORTO)**
Code 22532



**MPC FL 300
(FLANGIA)**
Code 22524



**MPC RP 300
(RETE DI
PROTEZIONE)**
Code 22528



**MPC BO 300
(BOCCAGLIO)**
Code 22536

PER INFORMAZIONI / FOR INFORMATION

ITALY
Pre Sales:
prevendita@vortice-italy.com
After Sales:
postvendita@vortice-italy.com

UNITED KINGDOM & REP. OF
IRELAND
Sales Dept:
sales@vortice.ltd.uk
Technical Dept:
technical@vortice.ltd.uk

OTHER COUNTRIES
Sales Dept:
export@vortice-italy.com
After Sales:
after-sales@vortice-italy.com

