

Technical Data Sheet

CODE 12613

VORTICE 150/6" ARI

Wall/window axial fans



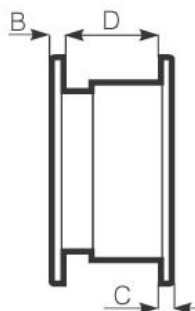
Certifications



TECHNICAL AND PERFORMANCE DATA

Frequency (Hz)	50-60	Voltage (V)	220-240
Inlet	Automatico	Weight (Kg)	2,52
Insulation class	II°	Max airflow - extract (l/s)	61,1
IP	X4	Max airflow - extract (m3/h)	220
Max absorbed current (A)	0,11	Max airflow - intake (l/s)	36,1
Max absorbed power (W)	25	Max airflow - intake (m3/h)	130
Max absorbed Power at 60 Hz (W)	25	Max airflow (m³/h)	220
Max ambient temperature for continuous operation (°C)	50	RPM	1330
Max room temperature for continuous operation at 60 Hz (°C)	50	Rpm - exhaust	1330
Ø Discharge hole (mm)	150	Rpm - supply	2520
		Sound pressure Lp [dB (A)] at 3 m	38,2

DIMENSIONS



Ø hole through the glass	185/190
Ø hole through the wall	260/265
Size A (mm)	300
Size B (mm)	9,5
Size C (mm)	10,5
Size D (mm)	135
Size E (mm)	2/38

PER INFORMAZIONI / FOR INFORMATION

ITALY

Pre Sales:
prevendita@vortice-italy.com
After Sales:
postvendita@vortice-italy.com

UNITED KINGDOM & REP. OF

IRELAND
Sales Dept:
sales@vortice.ltd.uk
Technical Dept:
technical@vortice.ltd.uk

OTHER COUNTRIES

Sales Dept:
export@vortice-italy.com
After Sales:
after-sales@vortice-italy.com

Technical Data Sheet

CODE 12613

VORTICE 150/6" ARI

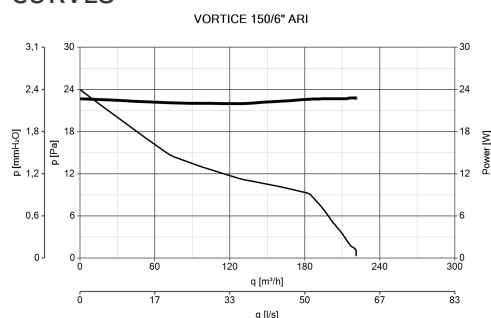
Wall/window axial fans



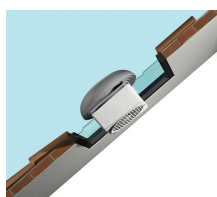
DESCRIPTION

- Model designed for installation recessed into wall.
- Reversibility function (intake or extraction).
- Automatic shutter: prevents the entry of cold air and bad smells when the appliance is switched off.
- Material: UV resistant ABS plastic (prevents ageing caused by exposure to sunlight)
- Nominal diameter 150 mm.
- Motor protected against thermal overload, with shaft turning in self-lubricating bushings, coupled to screw type thermoplastic impeller with wing profile blades.

CURVES



ACCESSORIES



KIT TE 150/6" (TORRETTA)

Code 13001



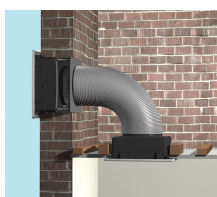
KIT SO (SOFFITTO)

Code 13012



KIT ML 150/6" (MURO LARGO)

Code 13015



KIT TC 150/6" (TETTO CON CONDOTTO)

Code 13027



CR5N

Code 12941



CR5

Code 12943



CREN

Code 12944



C PIR

Code 12998



C TIMER

Code 12999

PER INFORMAZIONI / FOR INFORMATION

ITALY

Pre Sales:

prevendita@vortice-italy.com

After Sales:

postvendita@vortice-italy.com

UNITED KINGDOM & REP. OF

IRELAND

Sales Dept:

sales@vortice.ltd.uk

Technical Dept:

technical@vortice.ltd.uk

OTHER COUNTRIES

Sales Dept:

export@vortice-italy.com

After Sales:

after-sales@vortice-italy.com