

Technical Data Sheet

CODE 12452

VORTICE 230/9" AR

Wall/window axial fans



Certifications

CE CE

C Tick Mark

EAC EAC

G-Mark

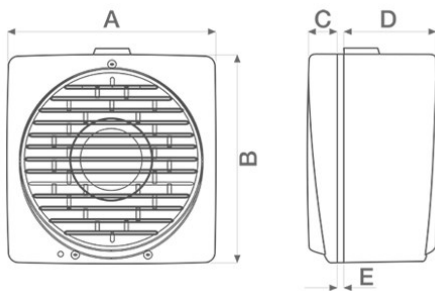
UK CA UKCA

CB TEST CERTIFICATE

TECHNICAL AND PERFORMANCE DATA

Frequency (Hz)	50-60	Voltage (V)	220-240
Inlet	Automatico	Weight (Kg)	3,45
Insulation class	II°	Max airflow - extract (l/s)	133
IP	X4	Max airflow - extract (m3/h)	480
Max absorbed current (A)	0,13	Max airflow - intake (l/s)	86
Max absorbed power (W)	26	Max airflow - intake (m3/h)	310
Max absorbed Power at 60 Hz (W)	26	Max airflow (m ³ /h)	480
Max ambient temperature for continuous operation (°C)	50	RPM	790
Max room temperature for continuous operation at 60 Hz (°C)	50	Rpm - exhaust	790
Ø Discharge hole (mm)	230	Rpm - supply	1080
		Sound pressure Lp [dB (A)] at 3 m	35,6

DIMENSIONS



Ø hole through the glass	257/262
Ø hole through the wall	257/262
Size A (mm)	294
Size B (mm)	297
Size C (mm)	31
Size D (mm)	130
Size E (mm)	2/38

PER INFORMAZIONI / FOR INFORMATION

ITALY

Pre Sales:
prevendita@vortice-italy.com
After Sales:
postvendita@vortice-italy.com

UNITED KINGDOM & REP. OF

IRELAND
Sales Dept:
sales@vortice.ltd.uk
Technical Dept:
technical@vortice.ltd.uk

OTHER COUNTRIES

Sales Dept:
export@vortice-italy.com
After Sales:
after-sales@vortice-italy.com

Technical Data Sheet

CODE 12452

VORTICE 230/9" AR

Wall/window axial fans



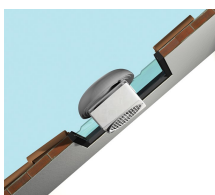
DESCRIPTION

- Model designed for window/wall mounted installation.
- Reversibility function (intake or extraction).
- Automatic shutter: prevents the entry of cold air and bad smells when the appliance is switched off.
- Material: UV resistant ABS plastic (prevents ageing caused by exposure to sunlight).
- Nominal diameter 230 mm.
- Motor protected against thermal overload, with shaft turning in self-lubricating bushings, coupled to screw type thermoplastic impeller with wing profile blades.

CURVES

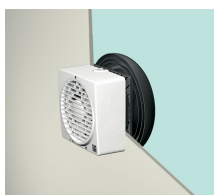
□

ACCESSORIES



KIT TE 230/9" (TORRETTA)

Code 13002



KIT SA 230/9" (SCHERMO ANTILUCE)

Code 13004



KIT MU (MURO)

Code 13018



KIT VV 230/9" (DOPPI VETRI)

Code 13022



KIT FF 230/9" (DOPPIA FINESTRA)

Code 13025



CR5N

Code 12941



CREN

Code 12944



C PIR

Code 12998



C TIMER

Code 12999



C TEMP

Code 12992



C SMOKE

Code 12993



C HCS



KIT TC 230/9"

Code 12994

**(TETTO CON
CONDOTTO)**

Code 13028

PER INFORMAZIONI / FOR INFORMATION

ITALY

Pre Sales:

prevendita@vortice-italy.com

After Sales:

postvendita@vortice-italy.com

UNITED KINGDOM & REP. OF

IRELAND

Sales Dept:

sales@vortice.ltd.uk

Technical Dept:

technical@vortice.ltd.uk

OTHER COUNTRIES

Sales Dept:

export@vortice-italy.com

After Sales:

after-sales@vortice-italy.com